



Operating Manual

Refrigerated Centrifuge

3-16PK

Please retain for later use!

In case of inquiries please state the following number:

Serial number:

© Copyright by
Sigma Laborzentrifugen GmbH
An der Unteren Söse 50
37520 Osterode am Harz
Germany

Phone +49 (0) 55 22 / 50 07-0
Fax +49 (0) 55 22 / 50 07-12
E-mail: info@sigma-zentrifugen.de

For service

please use our **service request** form on our website:
www.sigma-zentrifugen.de → [Service Area]

or contact:
Phone +49 (0) 55 22 / 50 07-84 25
Fax +49 (0) 55 22 / 50 07-94 25
E-mail: service@sigma-zentrifugen.de

EC – DECLARATION OF CONFORMITY

The product named hereinafter was developed, designed, and manufactured in compliance with the relevant, fundamental safety and health requirements of the listed EC directives and norms. In the event of modifications that were not authorised by us or if the product is used in a manner that is not in line with the intended purpose, this declaration will be rendered void.

Product name: Laboratory Centrifuge

Product type: Sigma 3-16PK

Order number: 10330, 10331, 10332

Directives: 2006/42/EG Machinery Directive
2006/95/EG Low Voltage Directive
2004/108/EG EMC Directive

Normes: EN 61010-2-020:2006
EN 61000-3-2:2006, A1:2009, A2 :2009
EN 61000-3-3:2008
EN 61326-1:2006

Sigma Laborzentrifugen GmbH

An der Unteren Söse 50
37520 Osterode
Germany

Authorised Representative for the
documentation:
Eckhard Tödteberg

Osterode, 01.09.2011

Michael Sender
General Manager

Table of Contents

1	General Information	11
1.1	Importance of the Operating Manual	11
1.2	Intended Use	11
1.3	Technical Data	12
1.3.1	Ambient Temperature	12
1.4	Scope of Supply	13
1.5	Standards and Regulations	13
2	Safety Instructions and Hazard Warnings	14
2.1	Symbols used in the Safety Instructions	14
2.2	Symbols used in the Operating Manual	15
2.3	Informal Notes on Safety	15
2.4	Safety Instructions for Centrifugation	16
2.4.1	Special Instructions	17
2.4.2	Resistance of Plastics	18
2.5	Prohibited Centrifuging Operations and Hazard Warnings	18
2.5.1	Special Hazards	19
2.6	Checks by the Operator	20
2.7	Instructions for Emergency Situations	20
2.8	Remaining Hazards	20
3	Transport and Storage	21
3.1	Dimensions and Weight	21
3.2	Notes on Transport	21
3.3	Notes on Storage	21
4	Set-up and Connection	22
4.1	Unpacking the Centrifuge	22
4.1.1	Transport Safety Device	22
4.2	Installation	23
4.2.1	Installation Site	23
4.2.2	Connection	23
4.2.3	Fuses	23

5	Using the Centrifuge	24
5.1	Description	24
5.1.1	Operating Elements	24
5.1.1.1	Operating Panel	25
5.1.1.2	Name Plate	25
5.1.2	Construction and Constructive Safety Measures	26
5.1.3	Drive	26
5.1.4	Operation and Display	26
5.1.5	Electronic System	26
5.1.6	Safety Devices	27
5.1.6.1	Lid Lock and Lid Closing Device	27
5.1.6.2	Standstill Monitoring	27
5.1.6.3	System Check	27
5.1.6.4	Ground Wire Check	27
5.1.6.5	Imbalance Monitoring System	27
5.2	Initial Start-Up	28
5.2.1	Switching the Centrifuge ON	28
5.2.2	Opening and Closing the Lid	28
5.2.3	Installation of Rotors	29
5.2.3.1	Installation of Angle Rotors with a Hermetically Sealed Lid	30
5.2.4	Installation of Accessories	31
5.2.4.1	Carrier Systems	32
5.2.4.2	Tubes	32
5.2.5	Service Life of Rotors and Accessories	32
5.2.6	Starting the Centrifuge	33
5.2.7	Interrupting a Centrifugation Run	33
5.2.7.1	Interrupting a Deceleration Process	33
5.2.7.2	Softstart and Softstop Function	34
5.3	Display / Program Options	34
5.3.1	Time	35
5.3.1.1	Changing the Time Increments	35
5.3.1.2	Short Run	36
5.3.1.3	Continuous Run	36
5.3.2	Speed	37
5.3.2.1	Changing the Speed Increments	37

5.3.3	Relative Centrifugal Force (RCF)	38
5.3.3.1	Changing the RCF Increments	38
5.3.4	Temperature	39
5.3.4.1	Precooling	40
5.3.5	Rotor Preselection	41
5.3.6	Program	42
5.3.6.1	Saving the Current Settings	42
5.3.6.2	Calling Up Stored Programs	42
5.3.7	Lockdown	43
5.3.7.1	Permanent Lockdown	43
5.3.8	Activating/Deactivating the Automatic Lid Opening Function	43
5.3.9	Activating/Deactivating the Sound Signal	44
6	Malfunctions and Error Correction	45
6.1	Error Mode	45
6.2	Error Correction	45
6.2.1	No Indication on the Display	45
6.2.2	Centrifuge cannot be started	45
6.2.3	Centrifuge decelerates during Operation	45
6.2.4	Lid cannot be opened	46
6.2.5	Temperature value cannot be reached	46
6.2.6	Emergency Lid Release	46
6.2.7	Error Codes	47
6.2.8	Service Contact	48
7	Care and Maintenance	49
7.1	Cleaning and Care	49
7.1.1	Centrifuge	49
7.1.2	Accessories	50
7.1.2.1	Plastic Accessories	50
7.1.2.2	Aluminum Accessories	50
7.1.3	Rotor, Buckets, and Multiple Carriers	51
7.1.4	Load-bearing Bolts	51
7.1.5	Glass Breakage	52
7.1.6	Condenser	53

7.2	Sterilization and Disinfection of the Rotor Chamber and Accessories	53
7.2.1	Autoclaving	54
7.3	Service	55
7.4	Return of defective parts	56
8	Disposal	57
8.1	Disposal of the Centrifuge	57
8.2	Disposal of the Packaging	57
9	Warranty and Liability	57
10	Suitable Accessories	58
10.1	Maximum speed for tubes	68
10.2	Graphical Representation of the Rotors	69
11	Appendix	71
11.1	Formulae – Mathematical Relations	71
11.1.1	Relative Centrifugal Force (RCF)	71
11.1.2	Density	71
11.1.3	Speed-Gravitational-Field-Diagram	71
11.2	Table of rotors and accessories with a different service life	73
11.3	Resistance Data	74
12	Index	77

1 General Information

1.1 Importance of the Operating Manual

- A fundamental requirement for the safe and trouble-free operation of the centrifuge is to be familiar with the fundamental safety instructions and all possible hazards.
- The operating manual includes important information concerning the safe operation of the centrifuge.
- This operating manual and in particular the notes on safety and hazards must be observed by all persons operating the centrifuge.
- In addition, the local rules and regulations for the prevention of accidents must be complied with.

1.2 Intended Use

Centrifuges are power-driven machines that separate liquids from solid matter, liquid mixtures, or solid mixtures by centrifugal force (see BGR 500, chapter 2.11, part 3). They are solely intended for this purpose. Any other use beyond this area of application is regarded as improper use. SIGMA Laborzentrifugen GmbH cannot be held liable for any damage resulting from such improper use.

The intended use also includes

- observation of all the notes and instructions included in the operating manual and
- compliance with the care, cleaning, and maintenance instructions.

1.3 Technical Data

Manufacturer:	S I G M A Laborzentrifugen GmbH An der Unteren Söse 50 37520 Osterode
Type:	3-16PK
Electr. connection: Protection class: IP code:	See name plate I 20
Connected load (kVA): Power consumption (kW): Drive: Refrigeration unit: Max. current consumption (A):	1.4 1.01 0.46 0.55 5.5 (at 220-240 V / 50-60 Hz) 11 (at 120 V 60 Hz)
<u>Performance data:</u> Max. speed (rpm): Max. capacity (ml): Max. gravitational field (x g): Max. kin. energy (Nm):	15 300 1000 23 031 9 970
<u>Other parameters:</u> Time range: Temperature range: Storage locations:	10 sec – 11 h 59 min; short run, continuous run -10 bis +40 °C 50
<u>Physical data:</u> Depth (mm): Width (mm): Height (mm): Weight (kg): EMC as per EN 61326: Noise level (dBA):	600 630 355 78 Class B < 57

Fig. 1.1: Technical Data

1.3.1 Ambient Temperature

The figures are valid for an ambient temperature of +23°C ± 2 °C and a nominal voltage ± 10 %*.

Allowable ambient temperature +5°C to +35°C.

Max. relative humidity of air 80% up to 31°C with a linear decrease to 67% relative humidity of air at 35°C.

Lowest storage and transport temperature –20°C (see chapter 3 "Transport and Storage", page 21).

* At a nominal voltage of 100V or 200V, a tolerance of +10% / -5% applies.

1.4 Scope of Supply

The centrifuge comprises:

- 1 connecting cable depending on the voltage variant
- 1 rotor wrench Part no. 930 100
- 20 ml slushing oil Part no. 70 104
- 1 tube of grease for load-bearing bolts Part no. 70 284

Documentation:

- Operating manual incl. EU Declaration of Conformity (page 5)

Accessories

according to your order, our order confirmation, and our delivery note.

1.5 Standards and Regulations

Please refer to the enclosed EU Declaration of Conformity (page 5).

2 Safety Instructions and Hazard Warnings

2.1 Symbols used in the Safety Instructions

International symbols used for SIGMA centrifuges:












Symbol	Title
	Gefährliche elektrische Spannung Dangerous voltage Courant haute tension
	Achtung, Bedienungsanleitung lesen Attention, consult instruction manual Attention, consulter mode d'emploi
	Ein (Netzverbindung) On (Power) Marche (mise sous tension)
	Aus (Netzverbindung) Off (Power) Arrêt (mise hors tension)
	Schutzleiteranschluss Protective earth (ground) Liaison à la terre
	Erde Earth (ground) Terre
	Netzstecker ziehen Unplug mains plug Tirer la fiche de prise
	Vorsicht Quetschgefahr Caution! Risk of bruising Attention! Danger de blessure
	Drehrichtungspfeil Arrow direction of rotation Flèche sens de rotation
	Heiße Oberfläche Hot surface Surface chaude
	Nicht mit dem Hausmüll entsorgen Do not dispose as part of domestic waste Ne pas jeter avec les déchets ménager

Fig. 2.1: Symbols used for SIGMA centrifuges

2.2 Symbols used in the Operating Manual

Symbols used in the Operating Manual:




Symbol	Title
	Gefährliche elektrische Spannung Dangerous voltage Courant haute tension
	Achtung, mögliche gefährliche Situation Attention, potentially dangerous situation Attention, situation potentiellement dangereuse
 Attention!	Hinweis auf wichtige Sachverhalte Note concerning important facts Information très importante

Fig. 2.2: Symbols used in the Operating Manual

2.3 Informal Notes on Safety

The operating manual is an integral part of the product.

- Please retain the operating manual throughout the service life of the centrifuge.
- Please hand the operating manual over to any subsequent owner or user of the centrifuge.
- Please add any amendments that you receive to the manual.
- Please make the operating manual readily available at the exact location of the centrifuge at all times.
- The operating personnel must have read and understood the operating manual prior to operation.
- Please also comply with the general and company-specific rules and regulations for the prevention of accidents.

2.4 Safety Instructions for Centrifugation

- Ensure that the centrifuge was set up properly (see section 4.2 "Installation", page 23).
- Check the centrifuge, rotor, and accessories for external signs of damage prior to start-up.
- Do not use the centrifuge with rotors and accessories that have not been approved by the manufacturer. In case of doubt, contact our service team (See 6.2.8 "Service Contact", page 48).
- Ensure that rotor and buckets are correctly fitted (see 5.2.3 "Installation of Rotors", page 29 and Fig. 2.3).
- Please observe the instructions on the installation of accessories (see 5.2.4, page 31).
- The load of the rotor as defined by the manufacturer and the maximum speed must not be exceeded (see the engraving on the rotor or bucket).
- The rotor must be loaded symmetrically at equal weights.

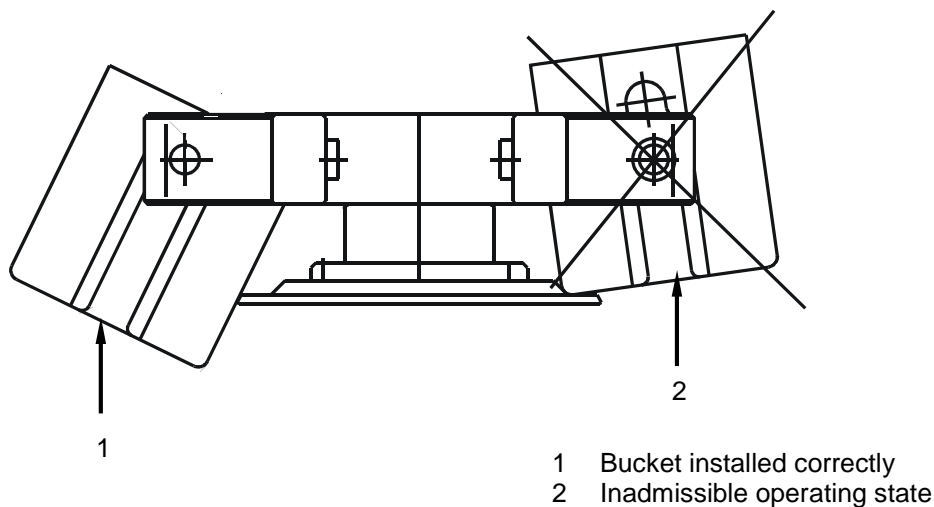


Fig. 2.3: Fitting of the buckets

2.4.1 Special Instructions

- If liquids with a density $> 1.2 \text{ g/cm}^3$ are used, reduce the speed (see 11.1.2 "Density", page 71).
- Protective clothing is not required for the operation of the centrifuge. The materials to be centrifuged may, however, require special safety measures (e.g. centrifugation of infectious, toxic, radioactive, or pathogenic substances).
- Spin infectious material in sealed rotors and buckets only in order to prevent the material from leaking into the centrifuge.
- Avoid the corrosion of the centrifuge and its accessories by careful maintenance (see chapter 7 "Care and Maintenance", page 49 ff).
- When not using the centrifuge, open the lid so that all liquids can evaporate.
- Stop the centrifuge immediately in the event of a malfunction. Eliminate the problem (see 6.2, page 45 ff) or inform the SIGMA Laborzentrifugen GmbH service team (see 6.2.8 "Service Contact", page 48).

2.4.2 Resistance of Plastics



Chemical influences have a strong effect on the polymeric chains of plastics, and therefore, on their physical properties. Plastic parts can be damaged if solvents, acids, or alkaline solutions are used.

- **Please refer to the resistance table (see 11.2, page 73)!**

2.5 Prohibited Centrifuging Operations and Hazard Warnings

Under the rules stipulated by the German trade association BGR 500, chapter 2.11, part 3, the operator is obliged to:

- take measures in order to prevent all danger to life or health during work.
- ensure that centrifuges are operated properly and entirely as intended (see chapter 1.2 "Intended Use", page 11 of this Instruction Manual).
- take measures for the safe opening of centrifuges.



Please comply with the following hazard warnings. In the case of non-compliance with the instructions, the manufacturer cannot be held liable or subject to any warranty claims.

- Only persons who have read and understood the operating manual in whole are authorized to operate the centrifuge (see 2.3 "Informal Notes on Safety", page 15).
- Keep informed about local fire prevention regulations and measures to contain harmful emissions (depending on the substances to be centrifuged).
- Do not use the centrifuge if it was installed incorrectly.
- Do not use the centrifuge without panels.
- Do not hit or move the centrifuge during its operation.
- Do not lean against or rest on the centrifuge during its operation.
- Maintain a safety distance of at least 30 cm around the centrifuge.
- Do not store any dangerous goods in the centrifuge area.
- Only use the centrifuge with rotors and accessories that have been approved by the manufacturer. We explicitly warn against the use of equipment of poor quality. Breaking glass or bursting vessels can cause dangerous imbalances at high speeds.

- Do not spin any substances that could damage the material of the rotors and buckets of the centrifuge in any way. Highly corrosive substances, for example, damage the material and affect the mechanical strength of the rotors and buckets.
- Infectious, toxic, pathogenic, and radioactive substances must be centrifuged in certified rotors and vessels. **Take suitable precautions for your own safety if there is a risk of toxic, radioactive, or pathogenic contamination.**
- **Please comply with the special precautions for taking care of the centrifuges and accessories. These are measures for maintaining operational safety!** (see chapter 7 "Care and Maintenance", page 49)
- Defective lid relieving devices could cause the centrifuge lid to fall (contact Service, if necessary). Risk of crushing!



Attention!

- Ensure that all repairs are performed only by authorized and specialized personnel (see 6.2.8 "Service Contact", page 48).

2.5.1 Special Hazards



- Do not open the lid when the rotor is in motion!
- Do not reach into the rotor chamber when the rotor is in motion!
- Do not hold your fingers between the lid and the housing when closing the lid. Risk of crushing!
- Do not use the centrifuge if the rotor is overloaded. (see 2.4 " Safety Instructions for Centrifugation", page 16).
- Do not use the centrifuge if the rotors and inserts show signs of corrosion or other defects.
- Do not use the centrifuge if the rotor is loaded asymmetrically.
- Do not use the centrifuge with tubes that are excessively long.
- Do not use the centrifuge with an incompletely loaded drum rotor, swing-out rotor or angle rotor with interchangeable buckets.
- Do not use the centrifuge within hazardous locations.
- Do not spin explosive or inflammable substances.
- Materials that chemically react with each other with a high level of energy are prohibited.

2.6 Checks by the Operator

Check all of the safety-relevant parts of the centrifuge at least once per month for any visible signs of damage (e.g. cracks, corrosion). This applies particularly to the following:

- Concentricity of the motor shaft:
 - Visual inspection: Slowly rotate the rotor by hand without the rotor tie-down screw. If the motor shaft does not turn around on a perpendicular axis, the motor and motor shaft must be replaced.
 - Refit the rotor correctly after visual inspection (see 5.2.3 "Installation of Rotors", page 29).
 - Auditory inspection: Check the unit for atypical running noises.
- Rubber parts:
 - Special attention must be paid to all of the rubber parts (e.g. motor cover, lid seal, adapter) in terms of visible structural changes. Defective parts must be replaced immediately.
- Fastening of the load-bearing bolts in the rotor
- Screw connections
- Rotors and accessories. (see 5.2.5 "Service Life of Rotors an Accessories", page 32).

2.7 Instructions for Emergency Situations

- If an emergency arises, switch off the centrifuge immediately!
- If in doubt, call the emergency doctor!

Fire-fighting measures or measures for the containment of harmful emissions depend on the local conditions and on the substances processed in the centrifuge. Please be informed about the rules and regulations that are applicable on-site.

2.8 Remaining Hazards

The centrifuge was built state-of-the-art and according to the accepted safety rules. Danger to life and limb of the user or of third parties, or impairments of the unit or other material assets cannot be completely excluded when the centrifuge is used.

- Use the centrifuge only for the purpose that it was originally intended for (see 1.2, page 11).
- Use the centrifuge only if it is in a perfect running state.
- Immediately eliminate any problems that can affect safety.

3 Transport and Storage

3.1 Dimensions and Weight

Depth:	600 mm
Width:	630 mm
Height:	355 mm
Weight:	78 kg

Fig.3.1: Dimensions and weight

3.2 Notes on Transport

- Always lift the centrifuge with a lifting device or with a sufficient number of people helping you.
- When lifting or carrying the centrifuge, always reach under the centrifuge from the side.
- Install the transport safety device (foamed plastic ring) into the rotor chamber.
- Transport the centrifuge within suitable packaging, and if at all possible, in its original packaging.

3.3 Notes on Storage

The centrifuge can be stored for up to a year without any problems.

- Store the centrifuge only in dry rooms.
- The storage temperature must be above -20°C .
- If you would like to store it for more than one year, or if you intend to ship it overseas, please contact the manufacturer.

4 Set-up and Connection

4.1 Unpacking the Centrifuge

The centrifuge is packaged in a slip-lid box.

- Remove the upper part of the box.
- Take out the box containing the accessories.
- Remove the upper foam cushion.
- Remove the slip-lid box.
- Lift the centrifuge upwards with a lifting device or with a sufficient number of people to lift it safely. When lifting or carrying the centrifuge, always reach under the centrifuge from the side.



Attention!

The centrifuge weighs approx. 78 kg!

Please retain the packaging for any possible future transport of the centrifuge.

4.1.1 Transport Safety Device

The transport safety device of the SIGMA 3-16PK centrifuge consists of a foamed plastic ring in the centrifuge chamber. It must be removed prior to start-up.

Procedure:

Procedure:

- Open the lid by pressing the lid key. If the centrifuge is not connected to the power supply, use the emergency release of the lid (see 6.2.6).
- Unscrew the rotor tie-down screw.
- Remove the foamed plastic ring from the rotor chamber, by lifting it carefully on one side.
- Please retain the transport safety device for the possibility of the return of the centrifuge.

4.2 Installation

4.2.1 Installation Site

All the energy supplied to the centrifuge is converted into heat and emitted to ambient air.

- Ensure sufficient ventilation.
- Keep a safety distance of at least 30 cm around the centrifuge so that the vents in the centrifuge remain fully effective.
- Do not position the centrifuge near heat generators.
- Avoid direct sunlight (UV radiation).
- The table must be stable and have a solid, even surface.



Attention!

During transport from cold to warmer places, condensation will collect inside the centrifuge. It is important to allow sufficient time for drying before the centrifuge can be used again.

4.2.2 Connection



The operating voltage on the name plate must correspond to the local supply voltage!

SIGMA laboratory centrifuges are units of safety class I and have a three-wire power cord with a IEC C13 connector. They are equipped with temperature fuses.

- Switch the unit off by actuating the mains power switch.
- If they have tripped, let the fuses cool down for approx. 2 minutes.
- Switch the unit on. The fuses are reactivated.

On the back, next to the mains power input, there is an additional ground wire connector (see Fig. 5.2, page 24) where a separate ground wire can be connected. This ensures that the admissible leakage current cannot shock anyone if a problem with the protective ground wire system were to occur. Only authorized and specialized personnel are permitted to connect the unit. Please contact the head of our service team (see 6.2.8 "Service Contact", page 48).

4.2.3 Fuses

Typically, the centrifuges must be protected on site with 16 A fuses of class "B" or "L".

5 Using the Centrifuge

5.1 Description

5.1.1 Operating Elements

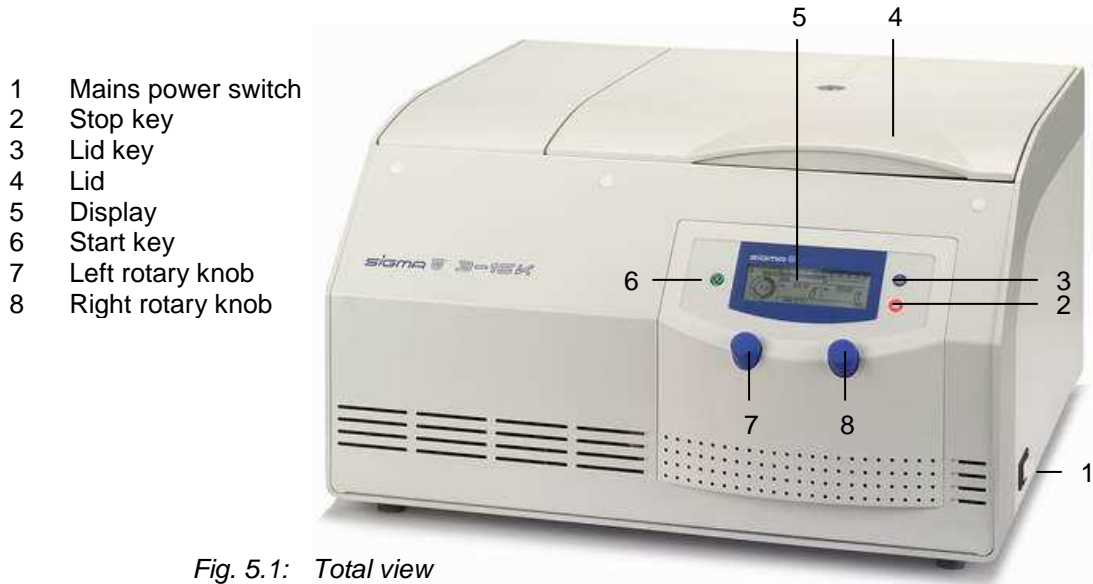


Fig. 5.1: Total view of the centrifuge

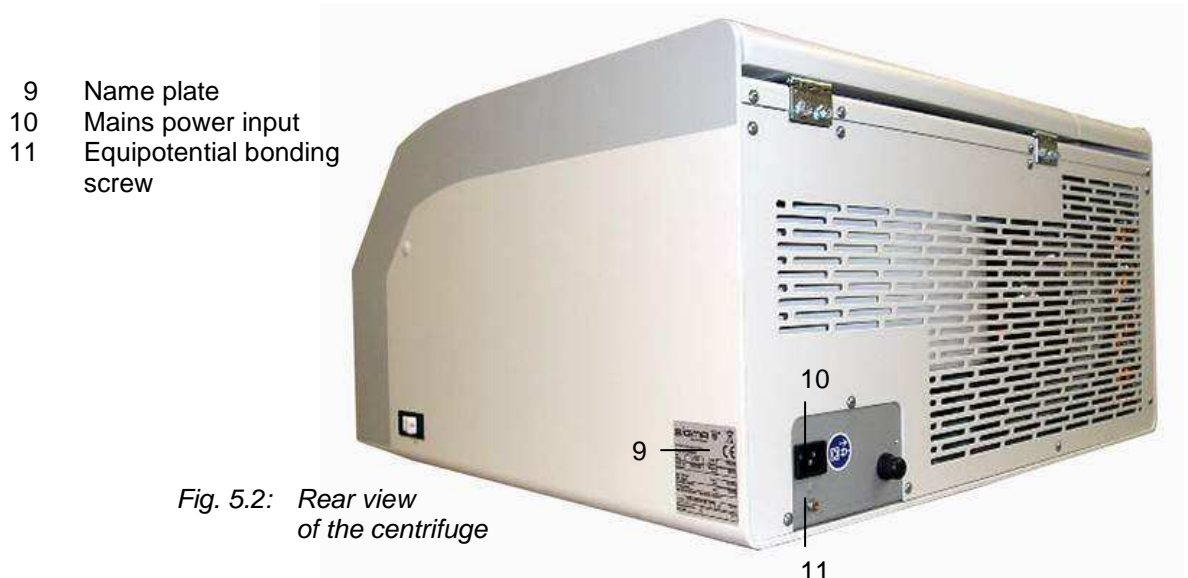


Fig. 5.2: Rear view of the centrifuge

5.1.1.1 Operating Panel



Fig. 5.3: Operating Panel

The centrifuge is started directly via the operating panel. When the centrifuge is switched on, all of the operating keys and displays will be illuminated for a short time. It is now ready for operation.

5.1.1.2 Name Plate

- 1 Manufacturer and registered office
- 2 Type name
- 3 Serial number
- 4 Max. speed
- 5 Kinetic energy
- 6 Max. density
- 7 Nominal voltage
- 8 Input fuse
- 9 Symbol for special disposal (see chapter 8)
- 10 CE mark in accordance with the directive 94/9/EC
- 11 Part number
- 12 Year of manufacture
- 13 Power consumption

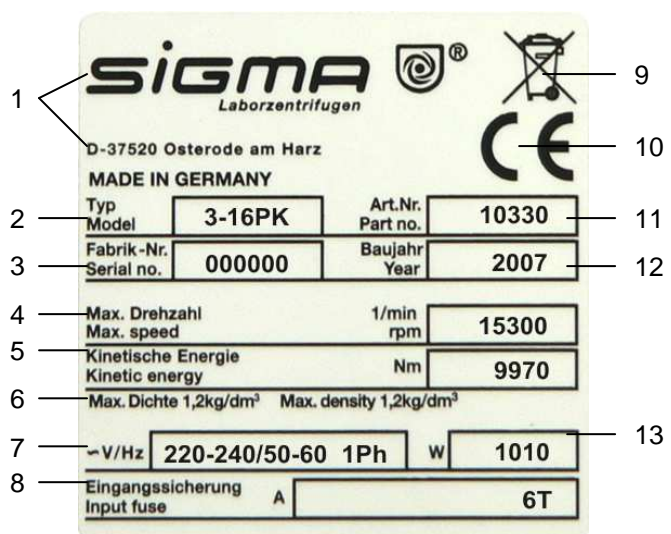


Fig. 5.4: Example of a name plate

5.1.2 Construction and Constructive Safety Measures

The centrifuge is installed within a solid construction. On the back, the lid is secured by solid hinges and on the front by one lid lock.

5.1.3 Drive

The drive motor is a well-dimensioned, collector-less asynchronous motor.

5.1.4 Operation and Display

The display is a hermetically sealed LCD display. It is operated by way of two rotary knobs and indicates the operating statuses.

5.1.5 Electronic System

The microprocessor-controlled electronic system ensures a wide range of adaptations of the centrifuge for various tasks. The following parameters can be set:

- Speed in steps of 1 or 100 rpm
- Relative centrifugal force RCF in steps of 1 or 10 x g
- Time between 10 sec and 11h 59min max.
- Continuous run
- Shortrun
- Rotor preselection
- Temperature range from – 10 °C to + 40 °C in steps of 1 °C
- Acceleration and deceleration curves
- Storage and call-up of programs

5.1.6 Safety Devices

Apart from the mentioned passive safety devices due to the solid design, the following active precautions are in place for your safety:

5.1.6.1 Lid Lock and Lid Closing Device

The centrifuge can only be started when the lid is properly closed. The electrical locks must be locked. The lid can only be opened when the rotor has stopped. If the lid is opened by way of the emergency release system during operation, the centrifuge will immediately switch off and decelerate brakeless. If the lid is open, the drive is completely separated from the mains power supply, i.e. the centrifuge cannot be started (see 6.2.6 "Emergency Lid Release", page 46).

5.1.6.2 Standstill Monitoring

Opening of the centrifuge lid is only possible if the rotor is at a standstill. This standstill is checked by the microprocessor.

5.1.6.3 System Check

An internal system check monitors the data transfer and sensor signals with regard to plausibility. Errors are detected with extreme sensitivity and displayed as error messages with a number on the speed and rcf display (see 6.2.7 "Error Codes", page 47).

5.1.6.4 Ground Wire Check

For the ground wire check, there is an equipotential bonding screw on the rear panel of the centrifuge. A ground wire check can be carried out by authorized and specialized personnel using a suitable measuring instrument (see 4.2.2 "Connection", page 23). Please contact the head of our service team (see 6.2.8 "Service Contact", page 48).

5.1.6.5 Imbalance Monitoring System

The "Imbalance" display may light up or emit a sound signal (see 5.3.9 "Activating/Deactivating the Sound Signal", page 44) in order to indicate that the centrifuge is in the inadmissible imbalance range. If the rotor is loaded unevenly, the drive will be switched off in the acceleration phase or during the run. The message "Imbalance" and the error number 46 for "Imbalance" will then flash on the display. The lid opens automatically after the rotor has come to a standstill. In both cases, loading has to be checked and balanced.

5.2 Initial Start-Up



Before the initial start-up, please ensure that your centrifuge is properly set up and installed (see 4.2 "Installation", page 23).

5.2.1 Switching the Centrifuge ON

- Press the mains power switch on the right side of the front (see Fig. 5.1, page 24).

The centrifuge display then illuminates.

5.2.2 Opening and Closing the Lid

The lid can be opened if the centrifuge is at a standstill and if the lid key is illuminated.

- Press the lid key in order to open the lid (see 5.3.8 "Activating/Deactivating the Automatic Lid Opening Function", page 43).

The centrifuge cannot be started if the lid is opened.

- To close the lid, press with both hands on the lid so that the lid lock audibly locks into place.
-



Do not hold your fingers between the lid and the housing when closing the lid. Risk of crushing!



Attention!

A flashing lid key indicates that the lid lock has not locked.

5.2.3 Installation of Rotors

- Open the centrifuge lid by pressing the lid key.
- Unscrew the rotor tie-down screw from the motor shaft (anti-clockwise).
- Lower the rotor with its central bore straight down onto the motor shaft.
- Tighten the rotor tie-down screw clockwise with the supplied rotor wrench with 7.5 Nm. In doing so, hold the rotor at its outer rim.
- After frequent use, the rotor tie-down screw must be loosened by some turns and fastened again. This must be done once a day or after 20 cycles. This ensures a proper connection between the rotor and the motor shaft.
- The rotor tie-down screw should only be tightened when a rotor is installed in order to prevent the collet chuck from being expanded.



Attention!

- When using rotors for microtiter plate formats: Ensure that the plate holders are inserted together with the plates into the buckets.
- The lid screw serves for the fastening of the lid onto the rotor only, not for the fastening of the rotor onto the collet chuck. Prior to installing the lid, check for the tight fit (7.5 Nm) of the rotor tie-down screw.
- **Please follow the safety instructions and hazard warnings in chapter 2, page 14 ff!**

5.2.3.1 Installation of Angle Rotors with a Hermetically Sealed Lid

- Screw the rotor cover onto the rotor and tighten it.
- Lower the rotor with the cover onto the motor shaft.
- Insert the rotor tie-down screw into the motor shaft. Tighten the rotor tie-down screw with 7.5 Nm using the supplied rotor wrench so that the spring washer assembly is compressed tightly.
- The rotor can also be used without a cover.
- Slightly grease the rotor and lid seals after cleaning.
- The rotors can be installed or removed with a closed lid after loosening the rotor tie-down screw.



Attention!

- **Please follow the safety instructions and hazard warnings in chapter 2, page 14 ff!**

- 1 Rotor tie-down screw
- 2 Lid
- 3 Lid seals

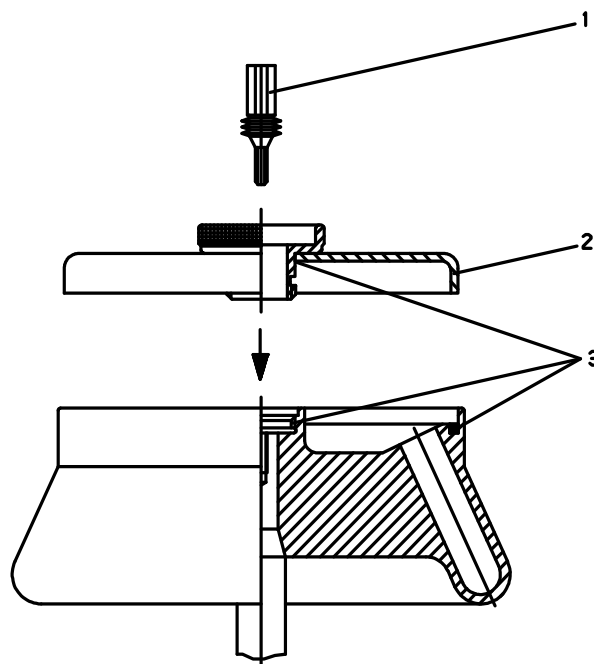


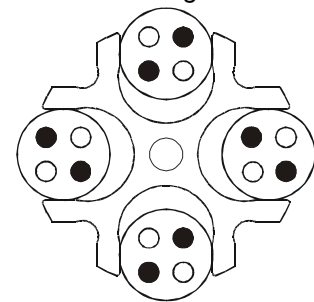
Fig. 5.5: Angle rotor with a hermetically sealed lid

5.2.4 Installation of Accessories

- Only use vessels that are suitable for the rotor (see chapter 10 "Suitable Accessories", page 58).
- Load all of the compartments of the swing-out rotors.
- Always load the opposite compartments of the rotors with the same accessories and filling to avoid imbalance.

- Centrifugation with low capacity: For the example, a swing-out rotor (16 x 15 ml) that is to be equipped with eight tubes only was used. The tubes must be installed symmetrically so that the buckets and their suspensions are loaded evenly.

Fig. 5.6: Permissible loading of the swing-out rotor



- Centrifugation with different tube sizes: Working with different tube sizes is possible. In this case, however, it is very important that opposite inserts are identical. The example shows a swing-out rotor with buckets and 2 x the insert 100 ml and 2 x the insert 4 x 15 ml with the corresponding glass or plastic tubes.

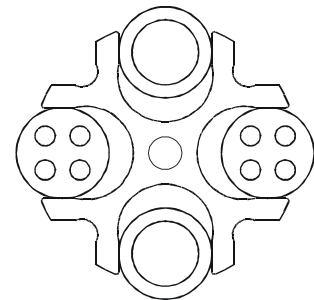


Fig. 5.7: Permissible loading of the swing-out rotor with different tube sizes

- Another example is the angle rotor 24 x 2.2 ml: The tubes must be installed symmetrically so that the rotor is loaded evenly.

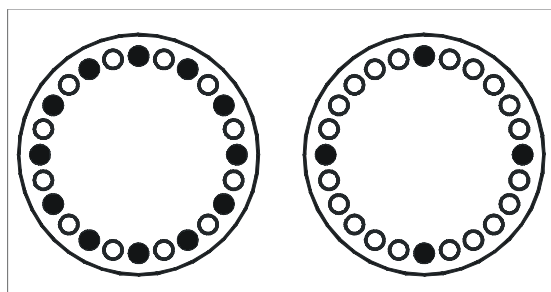


Fig. 5.8: Permissible loading of the angle rotor

5.2.4.1 Carrier Systems

In order to ensure easy handling, even if vessels of various sizes are used, carrier systems were developed.

- Load the opposite carriers with the same number of vessels and with the same weights in order to avoid imbalance.
- If all of the compartments of a carrier are not used, the buckets must be loaded evenly. Loading the edges of a bucket only is not permissible.

5.2.4.2 Tubes

- Load the tubes outside of the centrifuge. Liquids in the buckets or multiple carriers cause corrosion.
- Fill the tubes carefully and arrange them according to their weight. Imbalances result in the excessive wear of the bearings.
- In high-speed angle rotors, the vessels must be filled up to their useful volume (= the volume stated for the vessel). If the vessels are only partially filled, they will deform. This may result in leaks at the seals that may become loose.
- When using glass tubes, the maximum value of 4,000 x g must not be exceeded (except special high-strength glass tubes; please refer to the information provided by the manufacturer).



Attention!

- **Please observe the instructions on safety and hazards in chapter 2, page 14!**

5.2.5 Service Life of Rotors and Accessories

The rotors and accessories have a limited service life.

- Please perform regular checks (at least once per month) for safety reasons!
- Pay special attention to changes, such as corrosion, cracks, material abrasion etc.
- **After 10 years, they must be inspected by the manufacturer.**
- **After 50,000 cycles, the rotor must be scrapped for reasons of safety.**



- **If other data concerning the service life are engraved on the rotor or bucket, these data shall apply accordingly:** For example, a bucket with the engraving “max cycles = 10,000” has a service life of 10,000 cycles, and a rotor with the engraving “Exp.Date 02/15” must be scrapped in February 2015 at the latest (see fig. 5.9)!



Fig. 5.9: Different service life – engraving on the bucket/rotor



Attention!

- **Refer to the table of rotors and accessories with a different service life (see chapter 11 “Appendix”)!**

5.2.6 Starting the Centrifuge

The centrifuge is ready for operation when the start key is illuminated.

- Press the start key in order to start a centrifugation run.

5.2.7 Interrupting a Centrifugation Run

- Press the stop key in order to interrupt a centrifugation run.

The centrifugation run will be terminated prematurely.

5.2.7.1 Interrupting a Deceleration Process

- Press the start key during a deceleration process in order to interrupt it and to restart the centrifuge.

5.2.7.2 Softstart and Softstop Function

The softstart function is used to extend the acceleration time, whereas the softstop function is used to extend the deceleration time. The current combination is shown on the display. The stop key can be used to cyclically select various combinations:

- Press the key once to activate the softstart function.
- Press the key twice to activate the softstart function and the softstop function.
- Press the key three times to activate the softstop function alone.
- Press the key four times to activate the softstart function and the brakeless deceleration. The “soft stop” display flashes when the brakeless deceleration is active.
- Press the key five times to activate the “brakeless deceleration” function alone (the “soft stop” display flashes).
- Press the key once more to return to the standard operating mode.

5.3 Display / Program Options

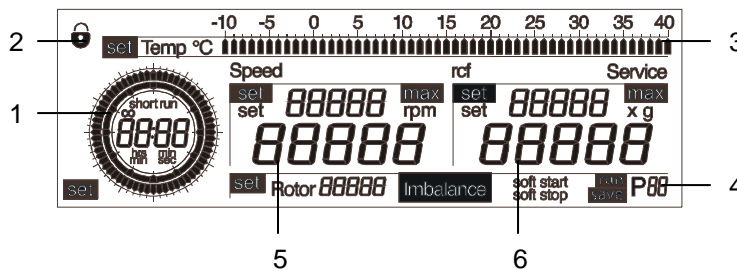


Fig. 5.10:
 Display completely active

The centrifuge display (fig. 5.10) has the following display fields:

- 1 Time field
- 2 "Lock" symbol for lockdown
- 3 Temperature field
- 4 Speed field
- 5 RCF field
- 6 Field for rotor selection, imbalance indication, run mode, and program selection

5.3.1 Time

The runtime of the centrifuge can be set at different intervals in a range from 10 seconds to 11 hours and 59 minutes.

To select the desired centrifugation time:

- Turn the left rotary knob until “set” appears in the lower left area of the display (Fig 5.11).
- Select the option by pressing or turning the right rotary knob. “Set” will now flash.
- Turn the right rotary knob until the desired duration is displayed.
- Press the right rotary knob or the start key in order to confirm the input. If this is not done, the value will be automatically reset to the last setting.

After 11:59 min, the display changes from “min:sec” to “hrs:min“. The time can then be changed in steps of 10 minutes.

It is also possible to change the runtime during the centrifugation run.



Attention!

If the centrifugation time is changed during the run, the centrifuge will run for the entire new time and will disregard the previous runtime that has already elapsed.

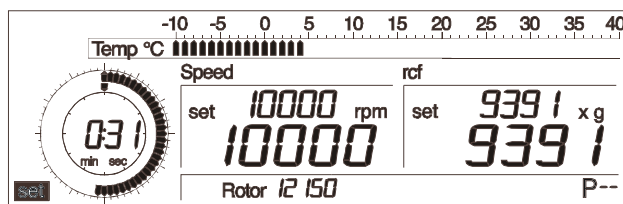


Fig. 5.11: Setting the time

5.3.1.1 Changing the Time Increments

In order to change the time in steps of 1 second (instead of in steps of 10 seconds in the min:sec mode) or in steps of 1 minute (instead of in steps of 10 minutes in the hrs:min mode):

- Keep the stop key pressed while setting the desired runtime with the right rotary knob.

5.3.1.2 Short Run

The short run enables the user to perform a short-time centrifugation with maximum power without changing the set parameters. The short run can only be started when the centrifuge is at a standstill.

- Keep the start key pressed during the short run.

The centrifuge accelerates at maximum power until the maximum speed of the rotor is reached. The start key flashes; the message “short run” is displayed in the time display and the duration of the short run is displayed (Fig. 5.12). When the start key is released, the centrifuge decelerates at maximum power to a standstill; the start key is illuminated.

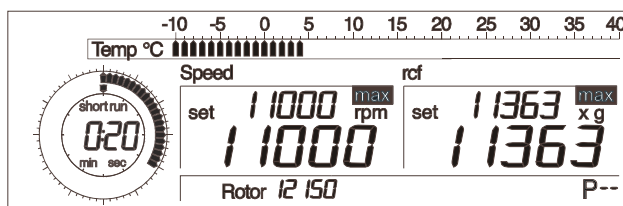


Fig. 5.12: Short run display

After finishing the short run, the original parameters will be displayed again.

5.3.1.3 Continuous Run

During the continuous run, the runtime of the centrifuge is unlimited and must be stopped manually. The centrifuge accelerates during the continuous run until the set speed is reached.

- Starting with the time setting 0:10 (see 5.3.1, page 35), turn the knob anti-clockwise.

Or:

- Starting with the time setting 11:59, turn the knob clockwise to the next setting. The message “cont” and the symbol “∞” will be displayed (Fig. 5.13).

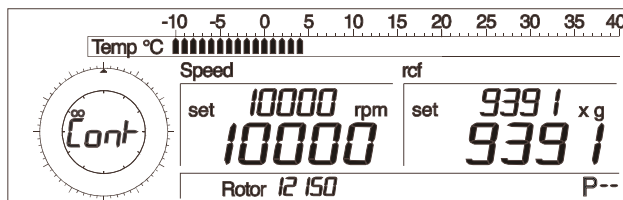


Fig. 5.13: Continuous run display

5.3.2 Speed

The desired speed of the centrifuge (revolutions per minute) can be set here (15,000 rpm in the example shown below). When the maximum permissible speed of the rotor is reached, the “max” display lights up.

To preselect a speed value:

- Turn the left rotary knob until “set” appears in front of the parameter “Speed” on the display (Fig. 5.14).
- Select the option by pressing or turning the right rotary knob. “Set” will now flash.
- Turn the right rotary knob until the desired value is displayed.
- Press the right rotary knob or the start key to confirm the selected value. If this is not done, the value will be automatically reset to the last setting.

It is possible to change the speed value during the centrifugation run.

The values for the rotor combinations can be found in chapter 10 “Suitable Accessories” on page 56 ff.

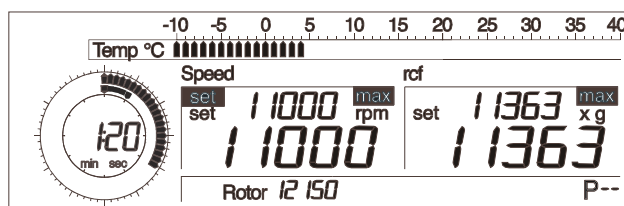


Fig. 5.14:
 Setting the speed

5.3.2.1 Changing the Speed Increments

In order to change the speed in steps of 1 rpm (instead of in steps of 100 rpm):

- Keep the stop key pressed while setting the desired speed with the right rotary knob.

5.3.3 Relative Centrifugal Force (RCF)

The relative centrifugal force (RCF) is the acceleration that the sample is subject to.

The RCF value is determined by the rotor geometry and speed. The RCF and speed values, therefore, depend on each other. When the maximum permissible RCF value of the rotor is reached, the "max" display lights up.

To preselect the RCF value:

- Turn the left rotary knob until "set" appears in front of the parameter "rcf" on the display (Fig. 5.15).
- Select the option by pressing or turning the right rotary knob. "Set" will now flash.
- Turn the right rotary knob until the desired value is displayed.
- Press the right rotary knob or the start key to confirm the selected value. If this is not done, the value will be automatically reset to the last setting.

It is also possible to change the RCF value during a centrifugation run.

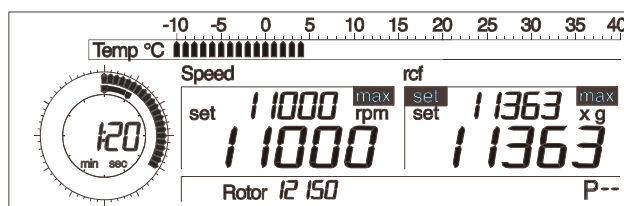


Fig. 5.15:
 Setting the relative centrifugal force

5.3.3.1 Changing the RCF Increments

In order to change the RCF value in steps of 1 x g (instead of in steps of 10 x g):

- Keep the stop key pressed while setting the desired RCF value with the right rotary knob.

5.3.4 Temperature

The temperature of the centrifuge is controlled by a refrigeration unit. Temperatures between -10 °C and + 40 °C can be preselected.

To preselect the temperature in steps of 1 °C:

- Turn the left rotary knob until "set" appears in the display field in front of the parameter "Temp" (Fig. 5.16).
- Select the option by pressing or turning the right rotary knob. "Set" will now flash.
- Turn the right rotary knob until the desired value is displayed.
- Press the right rotary knob or the start key to confirm the selected value. If this is not done, the value will be automatically reset to the last setting.

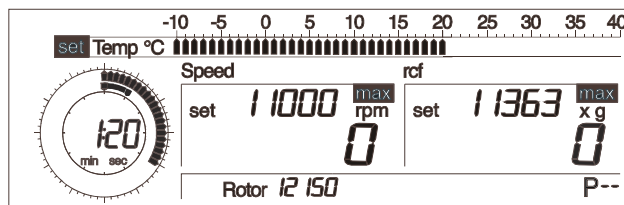


Fig. 5.16:
 Temperature preselection

The temperature scale shows the actual temperature in the rotor chamber.

- If the selected temperature (= set temperature) is below the actual temperature, the set temperature will be represented by a flashing bar on the temperature scale (Fig. 5.17).
- If the set temperature is above the actual temperature, it will be represented by one single bar on the temperature scale (Fig. 5.18).
- If the set temperature and the actual temperature are identical, the line of bars of the scale will be shown completely.

The temperatures that can be reached depend on the rotor type, speed, and ambient temperature.

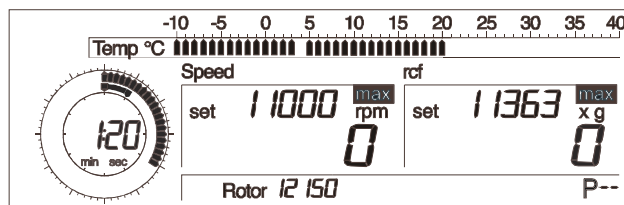


Fig. 5.17: Set temperature below actual temperature

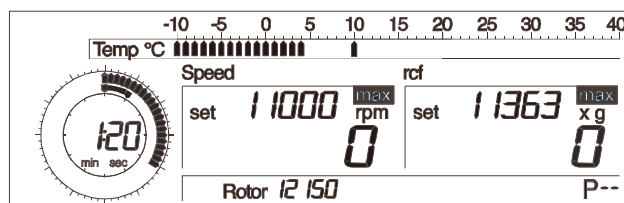


Fig. 5.18: Set temperature above actual temperature

5.3.4.1 Precooling

Depending on the substances to be centrifuged, it may make sense to precool the centrifuge. The precooling prevents the cooled samples in the uncooled centrifuge from heating up to an inadmissible temperature.

Precooling at a standstill

Unmoved air in the centrifuge chamber distorts the measuring and control behavior and causes the compressor to freeze overs. At temperatures below 0°C, aqueous liquids will freeze, making sedimentation impossible.

- Ensure that the rotor temperature will not fall below 0 °C if it is at a standstill!

Rapid cooling program "RAPID TEMP"

Precooling at a standstill may distort the measurement results and subsequently cause increased wear of the mechanical components. This is why the centrifuge has a special program that precools the centrifuge rapidly under defined conditions:

- Turn the left rotary knob until "run" appears on the display.
- Select the option by pressing the right rotary cursor. "Run" will now flash.
- Turn the right rotary knob until "PrC" is displayed.
- Press the right rotary knob or the start key to confirm the input. The display shows 1/3 of the maximum rotor speed and the corresponding RCF value. The runtime field indicates "cont" and the symbol "∞" for continuous run.

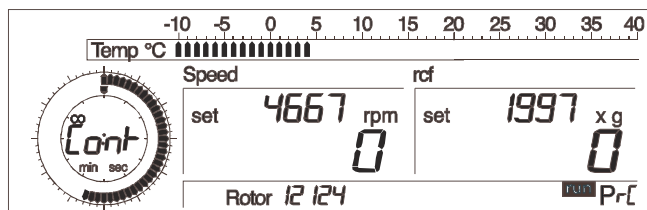


Fig. 5.19:
 Rapid cooling program
 "RAPID TEMP"

The program will only be loaded if the actual temperature is above the set temperature.

The program runs until the set value is reached. Then, a sound signal is issued (if it is activated – see 5.3.9) and the program that was set beforehand will be reloaded.

- Press the stop key to determinate the rapid cooling program prematurely.



Attention!

An entry will interrupt the rapid cooling program. There will be no message when the set temperature is reached. If no new runtime is entered, the centrifuge will continue to run infinitely (continuous run).



Info!

The automatic lid opening function is suppressed after a rapid cooling phase in order to prevent the system from reheating.



Attention!

The temperature value indicates the air temperature in the rotor chamber. Please bear in mind that the rotor – depending on its type – will reach this temperature only after a corresponding precooling time.

Open the lid in order to insert the samples. The refrigeration unit will stop so that no white frost can form inside the rotor chamber.

5.3.5 Rotor Preselection

The centrifuge SIGMA 3-16PK is equipped with an automatic rotor identification system. After the installation of the rotor, the rotor ID will be displayed. It is also possible to manually preselect the rotor. This is only possible at a standstill.

To select a rotor:

- Turn the left rotary knob until “set” appears in front of the option “Rotor” on the display (Fig. 5.20).
- Select the option by pressing or turning the right rotary knob. "Set" will now flash.
- Turn the right rotary knob until the desired rotor number is displayed.
- Press the right rotary knob or the start key to confirm the input. If this is not done, the value will be automatically reset to the last setting.

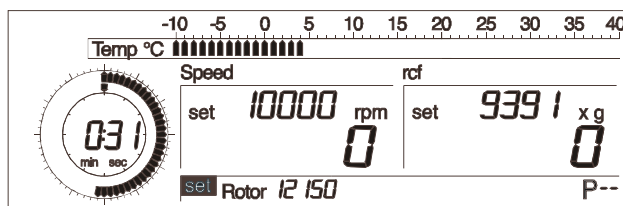


Fig. 5.20: Preselection of a rotor



Attention!

The system performs an automatic rotor check after the start. If another rotor than the preselected one is installed, the installed rotor will be displayed and the preselection speed will be corrected if necessary.

5.3.6 Program

The program is used to save or load certain recurrent settings of the centrifuge. This saves time and prevents typing errors. 50 different programs can be saved and called up. This is only possible at a standstill.

5.3.6.1 Saving the Current Settings

To save the current settings:

- Turn the left rotary knob until “save” appears on the display (Fig. 5.21).
- Select the option by pressing the right rotary knob. “Save” will now flash.
- Turn the right rotary knob until the desired program number is displayed. Empty storage location numbers flash.
- Press the right rotary knob or the start key to confirm the input.

The settings are now saved under this program number (program number 8 in the example).

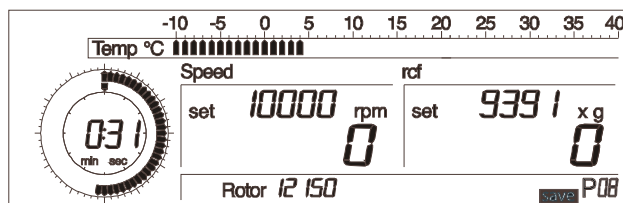


Fig. 5.21: Saving programs;
 here program number 8

5.3.6.2 Calling Up Stored Programs

If necessary, the saved programs can be called up:

- Turn the left rotary knob until “run” appears on the display (Fig 5.22).
- Select the option by pressing the right rotary cursor. “Run” will now flash.
- Turn the right rotary knob until the desired program number is displayed.
- Press the right rotary knob or the start key to confirm the input.

The saved program settings will be adopted.

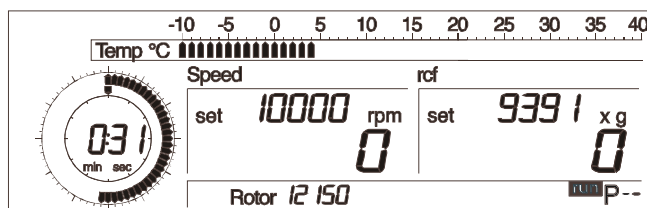


Fig. 5.22: Calling up stored programs;
 here program number 8

5.3.7 Lockdown

This function locks the parameters against all inadvertent changes.

- Turn the left rotary knob until a padlock symbol is displayed in the upper left corner of the display (Fig. 5.23).

As long as the padlock symbol is displayed, the parameters cannot be changed.

5.3.7.1 Permanent Lockdown

The parameter settings can also be locked with the help of the start key when the lid is open:

- Press the start key three times and on the third time hold it down for approx. two seconds.

After the activation of the function, the padlock symbol (Fig. 5.23) will flash. Now the centrifuge can be started and stopped, but the settings cannot be changed.

- Proceed in the same way in order to deactivate the function.

The current status remains active even if the centrifuge is switched off with the help of the mains power switch.

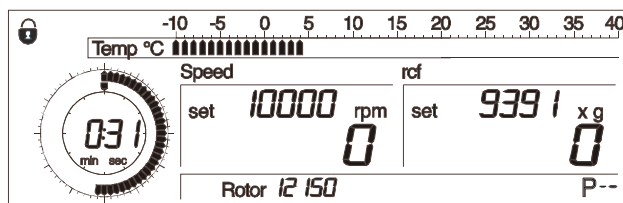


Fig. 5.23: Padlock symbol

5.3.8 Activating/Deactivating the Automatic Lid Opening Function

The Auto-Lid-Open function must be activated so that the lid opens automatically at the end of the operation:

- Press the lid key three times when the lid is open and on the third time hold it down for approx. two seconds.
- Proceed in the same way in order to deactivate the function.

After every change, the current status of the setting is displayed in the form of a message running over the display ("Auto-Lid-Open on" or "off").

5.3.9 Activating/Deactivating the Sound Signal

If this function is active, a sound signal can be heard at the end of the operation as well as in the event of an error message or imbalance.

- Press the lid key five times and on the fifth time hold it down for approx. two seconds.
- Proceed in the same way in order to deactivate the function.

After every change, the current status of the setting is displayed in the form of a message running in the display ("Buzzer on" or "off").

6 Malfunctions and Error Correction

6.1 Error Mode

Malfunctions are indicated by error messages with a number in the speed and rcf display. If the sound signal is activated, it sounds when the error message is displayed (see 5.3.9 "Activating/Deactivating the Sound Signal", page 44).

6.2 Error Correction

- Eliminate the source of the problem (see 6.2.1 to 6.2.7, page 45 ff).
- Acknowledge the error messages with the lid key.

6.2.1 No Indication on the Display

- Voltage in the socket?
- Power cord plugged in and line voltage present?
- Fuse OK?
- Mains power switch on?
- Lid closed?
- Check fuse in the mains supply.
- Plug in power cord correctly.
- Switch unit off and let fuses cool down for approx. 2 min.
- Switch on power.
- Close lid (see 6.2.4 "Lid cannot be opened", page 46).

6.2.2 Centrifuge cannot be started

- Start key LED not illuminated:
- Lid key LED flashes:
- Power off/on. If the error occurs again, call the service.
- Open and close the lid again. If error occurs again although both locks are locked, call the service.

6.2.3 Centrifuge decelerates during Operation

- There was a brief mains power failure (at least 2 sec), error message 61
- Centrifuge displays an error from 1 to 11 after powering on.
- Press the start key in order to restart the centrifuge.
- Power off/on (see 6.2.7 "Error Codes", page 47). If the error occurs again, call the service.

6.2.4 Lid cannot be opened

- When trying to open the lid, the lid lock has not released.
- The lid cannot be opened although the lock has audibly unlocked.
- Close the lid again. Press down the center of the lid until the lock audibly locks. Open the lid again. If the error occurs again, unlock the lid manually (see 6.2.6 "Emergency lid release", page 46) and call the service
- Check/clean the lid seal. Apply talcum powder to the seal to avoid sticking.

6.2.5 Temperature value cannot be reached

- The centrifuge does not reach the set temperature value.
- Check/clean the condenser (see 7.1.6, page 53). If the error occurs again, call the service.

6.2.6 Emergency Lid Release

In the event of a power supply failure, it is possible to manually open the centrifuge lid using a stopper. It is located at the upper right side.



- Switch off the mains power switch and disconnect the power cord from the socket.
- Remove the stopper, e.g. with a screwdriver.
- Pull the visible string in order to release the lid.
- Then, reinsert the stopper into the opening.



The lid may only be unlocked and opened when the rotor is at a standstill.

If the lid is opened by way of the emergency lid release during operation, the centrifuge will be switched off immediately and decelerate brakeless.

6.2.7 Error Codes

Error no.	Kind of error	Measure	Note
1-9	System error	<ul style="list-style-type: none"> allow to slow down power off/on 	All these errors stop the centrifuge or cause it to slow down.
10-19	Speedometer error	<ul style="list-style-type: none"> allow to slow down power off/on 	
20-29	Motor error	<ul style="list-style-type: none"> power off/on ensure ventilation 	
30-39	EEPROM error	<ul style="list-style-type: none"> allow to slow down power off/on 	With errors 34,35,36, the centrifuge will stop. With errors 37,38, error message only.
40-45	Temperature error (only for refrigerated centrifuges)	<ul style="list-style-type: none"> allow to slow down power off/on allow to cool down provide better ventilation 	
46-49	Imbalance error	<ul style="list-style-type: none"> allow to slow down power off eliminate the imbalance 	
50-59	Lid error	<ul style="list-style-type: none"> press lid key close lid remove foreign matter from the opening of the lid lock device 	With error 50 and 51, the centrifuge will stop.
60-69	Process error	<ul style="list-style-type: none"> allow to slow down power off/on 	With error 60, message "power failure during run". With error 61, message "stop after power on".
70-79	Communication error	<ul style="list-style-type: none"> allow to slow down power off/on 	
80-99	Parameter error	<ul style="list-style-type: none"> allow to slow down provide for better ventilation power off/on 	With error 83, error message only.

Fig.6.2: Error Codes



Attention!

If it is impossible to eliminate the errors, please call the service!

6.2.8 Service Contact

In the event of queries, malfunctions, or spare part enquiries:

from Germany:

- use the **service request** form at www.sigma-zentrifugen.de → [Service Area]
- or contact

SIGMA Laborzentrifugen GmbH
An der Unteren Söse 50
37520 Osterode (Germany)
Tel. +49 (0) 55 22 / 50 07-84 25
Fax +49 (0) 55 22 / 50 07-94 25
E-mail: service@sigma-zentrifugen.de

outside Germany:

- contact our agency in your country. All agencies are listed at www.sigma-zentrifugen.de → [Contacts] → [Foreign agencies]



Attention!

- **If you would like to utilise our service, please state the type of your centrifuge and its serial number.**
- **Make use of our service request on the Internet. Please use the request form (see above) on our website.**

7 Care and Maintenance

7.1 Cleaning and Care

The centrifuge, rotor, and accessories are subject to high mechanical stress. Thorough maintenance care performed by the user extends the service life and prevents premature failure.



Attention!

If corrosion or other damage occurs due to improper care, the manufacturer cannot be held liable or subject to any warranty claims.

- Use soap water or other water-soluble, mild cleaning agents (pH value between 6 and 8).
- Avoid corrosive and aggressive substances.
- Do not use alkaline solutions or solvents.
- Do not use agents with abrasive particles.
- Do not expose the centrifuge and rotors to intensive UV radiation or thermal stress (e.g. by heat generators).

7.1.1 Centrifuge



- Disconnect the power cord from the socket before cleaning.
- Carefully remove all liquids, including water and particularly all the solvents, acids, and alkaline solutions from the centrifuge chamber using a cloth in order to avoid damage to the motor bearings.
- If the centrifuge has been contaminated with toxic, radioactive, or pathogenic substances, clean the centrifuge chamber immediately with a suitable decontamination agent (depending on the type of contamination). **Take suitable precautions for your own safety if there is a risk of toxic, radioactive, or pathogenic contamination.**



- Grease the motor shaft slightly after cleaning (grease for load-bearing bolts part no. 70284).
- Open the centrifuge when it is not in use so moisture can evaporate. This prevents the increased wear of the motor bearings.

7.1.2 Accessories



For the care of the accessories, special safety measures must be considered as these are measures that will ensure operational safety at the same time.

- Immediately rinse off the rotor, buckets, or accessories under running water if they have come into contact with any liquids that may cause corrosion. Use a brush for test tubes to clean the bores of angle rotors. Turn the rotor upside down and allow it to dry completely.
- Clean the accessories outside the centrifuge once a week or preferably after each use. Rubber cushions should be removed.



- If the rotors or accessories have been contaminated with toxic, radioactive, or pathogenic substances, clean them immediately with a suitable decontamination agent (depending on the type of contamination). **Take suitable precautions for your own safety if there is a risk of toxic, radioactive, or pathogenic contamination.**
- Dry the accessories with a soft cloth or in a drying chamber at approx. 50°C.

7.1.2.1 Plastic Accessories

- If solvents, acids, or alkaline solutions have been used, clean the plastic accessories thoroughly. The chemical resistance of plastic decreases with rising temperatures (e.g. during drying).

7.1.2.2 Aluminum Accessories

Especially aluminum parts are susceptible to corrosion.

- Acid-containing cleaning agents and alkaline cleaning agents must be avoided (see 7.1 "Cleaning and Care", page 49).
- Grease aluminum parts at least once a week with slushing oil (part no. 70104).

This essentially increases their service life and reduces susceptibility to corrosion.

7.1.3 Rotor, Buckets, and Multiple Carriers

Rotors, buckets, and multiple carriers are produced with highest precision, in order to withstand the permanent high stress with high gravitational fields.

Chemical reactions as well as stress-corrosion (combination of oscillating pressure and chemical reaction) can affect or destroy the metals. Barely detectable cracks on the surface can expand and weaken the material without any visible signs.

- Check the material regularly (at least once a month) for
 - cracks
 - visible damage of the surface
 - pressure marks
 - signs of corrosion
 - other changes.
- Check the bores of the rotors and multiple carriers.
- Replace any damaged components immediately for your own safety.
- Protect the rotors, lid seals, and rubber cushions (if included) at least once per week with the supplied slushing oil (part no. 70104).
- Grease the rotor tie-down screw with grease for load-bearing bolts (part no. 70284).

7.1.4 Load-bearing Bolts

Only greased load-bearing bolts ensure the even swinging of the buckets, and therefore, the quiet run of the centrifuge. Ungreased bolts can lead to a system shut-down due to imbalances.

- Grease the load-bearing bolts of the rotor after each cleaning slightly with grease for load-bearing bolts (part no. 70284).

7.1.5 Glass Breakage

- Glass particles will damage the surface coating (e.g. Eloxal) of the buckets, which will then lead to corrosion.
- Glass particles in the rubber cushions of the buckets will cause glass breakage again.
- Glass particles on the pivot bearing of the load-bearing bolts prevent the buckets and carriers from swinging evenly, which will cause an imbalance.
- Glass particles in the centrifuge chamber will cause metal abrasion due to the strong air circulation. This metal dust will not only pollute the centrifuge chamber, rotor, and materials to be centrifuged but also damage the surfaces of the accessories, rotors, and centrifuge chamber.



In the case of glass breakage, immediately remove all glass particles (e.g. with a vacuum cleaner). Replace the rubber cushions since even thorough cleaning will not remove all glass particles.

In order to completely remove the glass particles and the metal dust from the rotor chamber:

- Grease the upper third of the centrifuge chamber with e.g. Vaseline.
- Then, let the rotor rotate for a few minutes at a moderate speed (approx. 2,000 rpm). The glass and metal particles will now collect at the greased part and can easily be removed with a cloth together with the grease.
- Remove the grease with glass and metal particles with a cloth.
- If necessary, repeat this procedure.

7.1.6 Condenser

In order to cool the refrigerant that is compressed by the refrigeration unit, a lamellar condenser is used. It is cooled by air.

Dust and dirt obstruct the cooling flow of air. Dust on condenser pipes and lamellas reduces the heat exchange and thus the performance of the refrigeration unit. This is why the installation site should be as clean as possible.

- Check the condenser at least once per month for dirt and clean it if necessary.
- If you have any queries, please contact our service department (see 6.2.8 "Service Contact", page 48).

7.2 Sterilization and Disinfection of the Rotor Chamber and Accessories

- Use commercially-available disinfectants such as, for example, Sagrotan[®], Buraton[®], or Terralin[®] (available at chemist's shops or drugstores).
- The centrifuges and the accessories consist of various materials. A possible incompatibility must be considered.
- Before using cleaning or decontamination agents that were not recommended by us, contact the manufacturer to ensure that such a procedure will not damage the centrifuge.
- For autoclaving, consider the continuous heat resistance of the individual materials (see 7.2.1 "Autoclaving", page 54). Please contact us if you have any queries (see 6.2.8 "Service Contact", page 48).



If dangerous materials (e.g. infectious and pathogenic substances) are used, the centrifuge and accessories must be disinfected.

7.2.1 Autoclaving

The service life of the accessories essentially depends on the frequency of autoclaving and use.

- Replace the accessories immediately when the parts show changes in color or structure or in the occurrence of leaks etc.
- During autoclaving, the caps of the tubes must not be screwed on in order to avoid the deformation of the tubes.

It cannot be excluded that plastic parts, e.g. lids or carriers, may deform during autoclaving.

Autoclaving:

Accessories	max. temp. °C	min. time min	max. time min	max. cycles
Glass tubes	134-138	3	40	-
Polycarbonate tubes	115-118	30	40	20
Polypropylene tubes	115-118	30	40	30
Teflon tubes	134-138	3	5	100
Aluminum rotors	134-138	3	5	-
Polycarbonate/Polyallomer lids for angle rotors	115-118	30	40	20
Polysulfone lids for angle rotors	134-138	3	5	100
Aluminum buckets	134-138	3	5	-
Polycarbonate caps for buckets	115-118	30	40	50
Polypropylene caps for buckets	115-118	30	40	50
Polysulfone caps for buckets	134-138	3	5	100
Rubber adapters	115-118	30	40	-
Rubber cushions	115-118	30	40	-
Round carriers made of polypropylene	115-118	30	40	-
ditto, made of polyallomer and polycarbonate	115-118	30	40	-
Rectangular carriers made of polypropylene	115-118	30	40	-
ditto, made of polyallomer and polycarbonate	115-118	30	40	-

Fig. 7.1: Autoclaving table

7.3 Service



Attention!

In the event of service work that requires the removal of the panels, there is a risk of electric shock or mechanical injury. Only qualified specialist personnel is authorised to perform this service work.

The centrifuge is subject to high mechanical stress. In order to be able to withstand this high level of stress, high-quality components were used during the production of the centrifuge. Nevertheless, wear cannot be excluded and it may not be visible from the outside. Especially the rubber parts that are – among other things – part of the motor suspension, are subject to ageing.

This is why we recommend having the centrifuge checked by the manufacturer during an inspection once per year in the operating state and once every three years in the dismantled state. Rubber parts should be replaced after three years or a maximum of 15,000 cycles.

Information and appointments:

in Germany:

- use the **service request** form at www.sigma-zentrifugen.de → [Service Area]
- or contact

SIGMA Laborzentrifugen GmbH
An der Unteren Söse 50
37520 Osterode (Germany)
Tel. +49 (0) 55 22 / 50 07-84 25
Fax +49 (0) 55 22 / 50 07-94 25
E-mail: service@sigma-zentrifugen.de

outside Germany:

- contact our agency in your country. All agencies are listed at www.sigma-zentrifugen.de → [Contacts] → [Foreign agencies]



Attention!

- **If you would like to utilise our service, please state the type of your centrifuge and its serial number.**
- **Make use of our online service request on the Internet. Please use the request form (see above) on our website.**

7.4 Return of defective parts

Although we exercise great care during the production of our products, it may be necessary to return a unit or accessory to the manufacturer.

In order to ensure the quick and economical processing of returns of centrifuges, spare parts, or accessories, we require complete and extensive information concerning the process. Please fill in the following forms completely, sign them, and enclose them with the return package:

1. Declaration of decontamination

As a certified company and due to the legal regulations for the protection of our employees and of the environment, we are obliged to certify the harmlessness of all incoming goods. For this purpose, we require a declaration of decontamination.

- The form must be filled in completely and signed by authorised and specialised personnel only.
- Affix the original form in a clearly visible manner to the outside of the packaging.



Attention!

If no such declaration is enclosed in the return package, we will perform the decontamination at your expense!

2. Form for the return of defective parts

This form is for the product-related data. They facilitate the assignment, and they enable the quick processing of the return. If several parts are returned together in one packaging, please enclose a separate problem description for every defective part.

- A detailed problem description is necessary in order to perform the repair quickly and economically.
- Please note on the form if you would like to receive a cost estimate. Cost estimates are only prepared upon request and against charge. If an order is placed, these charges will be offset.



Attention!

The unit must be packaged in a transport-safe manner. Please use the original packaging, if at all possible.

If the product is dispatched to us in unsuitable packaging, you will be charged the cost for returning it to you in new packaging.

The forms can be downloaded online from
www.sigma-zentrifugen.de → [Service Area].

8 Disposal

8.1 Disposal of the Centrifuge



In accordance with the directive 2002/96/EC, SIGMA centrifuges are marked with the symbol shown to the left. This symbol means that it is not permissible to dispose of the unit among household trash.

- You can return these centrifuges free of cost to SIGMA Laborzentrifugen GmbH.
- Please ensure that the unit is decontaminated.
- Please fill in the enclosed declaration of decontamination.
- Please comply with any other applicable local rules and regulations.

8.2 Disposal of the Packaging

- Use the packaging to return the centrifuge for disposal.
- Or:
- Dispose of the packaging, after having separated the individual materials.
 - Please comply with all local rules and regulations.

9 Warranty and Liability

The warranty and liability are subject to our "General Conditions" that were distributed to the operator upon the conclusion of the contract.

Warranty and liability claims are excluded if they are due to:

- Improper use
- Non-compliance with the safety instructions and hazard warnings in the operating manual
- Force majeure

10 Suitable Accessories

Part no.	Description	Max. speed (rpm)	Max. gravitational field (x g)
11180	Swing-out rotor, 4 place, for buckets no. 13180, 13190, 13194	4 200	3 372 / 3 392
13194	Bucket for hexagon adapters no. 18309 - 18312, for culture tubes 15 and 50 ml, 1 set = 2 pcs., max. radius 16.8 cm, min. radius 6.6 cm	4 500	3 803
18309	Hexagon carrier for 4 culture tubes 50 ml with skirt or flat bottom, max. Ø 29.4/36 x 90 - 120 mm, 1 set = 2 pcs.		
18310	Hexagon carrier for 4 culture tubes 50 ml, e.g. no. 15151, 1 set = 2 pcs.		
18311	Hexagon carrier for 10 culture tubes 15 ml, e.g. no. 15115, 1 set = 2 pcs.		
18312	Hexagon carrier for 10 culture tubes 15 ml with skirt or flat bottom, 1 set = 2 pcs.		
18313	Hexagon carrier for 4 tubes 30 ml, flat bottom or skirt, max. Ø 25/31 x 65 - 95 mm, e.g. Sterilin tube 30 ml, Barloworld Scientific Ltd., 1 set = 2 pcs.		
13180	Rectangular bucket, for rectangular carriers no. 18000 - 18200, sealable with cap no. 17112, max. tube length 115 mm, 1 set = 2 pcs., max. radius 17.1 cm, min. radius 7.6 cm	4 500	3 871
17112	Rectangular polysulfone sealing cap, clear, incl. 1 set clips no. 17118, 1 set = 2 pcs.		
18002	Rectangular carrier for 20 reaction vials 1.5/2.0 ml, max. Ø 11 mm, e.g. no. 15008, 15040, 1 set = 2 pcs.		
18003	Upper part for 18002 for + 20 reaction vials 1.5/2.0 ml, max. Ø 11 mm, e.g. no. 15008, 15040, 1 set = 2 pcs.		
18005	Rectangular carrier for 20 tubes approx. 5 ml, flat and round bottom, max. Ø 12.0 x 60 - 75 mm, e.g. no. RIA tube 15060, 1 set = 2 pcs.		
18007	Rectangular carrier for 20 tubes approx. 7 ml, flat and round bottom, max. Ø 12.3 x 80 - 105 mm, e.g. no. 15007, 15027, 1 set = 2 pcs.		
18009	Rectangular carrier for 20 round bottom tubes 5 - 6 ml, max. Ø 12.8 x 70 - 90 mm, e.g. no. Hemolyse, RIA tube 15060, 1 set = 2 pcs.		
18010	Rectangular carrier for 12 tubes 10 - 12 ml, flat and round bottom, max. Ø 16.8/17.5 x 60 - 85 mm, e.g. no. 15000, 15010, 15039, 1 set = 2 pcs.		
18012	Rectangular carrier for 12 tubes 6 - 7 ml, max. Ø 13.5/18 x 65 - 90 mm, e.g. Vacutainer, 1 set = 2 pcs.		
18015	Rectangular carrier for 12 tubes 10 - 15 ml, flat and round bottom, max. Ø 17 x 90 - 105 mm, e.g. no. 15015, 15020, 15022, 15023, 15024, 1 set = 2 pcs.		

Part no.	Description	Max. speed (rpm)	Max. gravitational field (x g)
18016	Rectangular carrier for 4 culture tubes 15 ml (Nunc, Corning, Falcon, Greiner) e.g. 15115, polypropylene		
18017	Rectangular carrier for 10 tubes 15 ml, and tubes with stopper, max. Ø 17.5/19,5 x 80 - 112 mm, e.g. Monovettes 9 ml and 10 ml, polypropylene		
18025	Rectangular carrier for 5 glass tubes 25 ml, max. Ø 24 x 85 - 105 mm, e.g. 15025, 15026, polyallomer		
18022	Rectangular carrier for 4 sterilin tubes 30 ml, graduated up to 20 ml, flat or round bottom, incl. cap, max. Ø 25/31 x 65 - 95 mm, polypropylene, Barloworld Scientific Ltd.		
18030	Rectangular carrier for 5 tubes with screw cap 27 - 30 ml, max. Ø 25.4/27.5 x 80 - 110 mm, e.g. 15029, 15030, 15032, polypropylene		
18050	Rectangular carrier for 2 tubes 50 ml, max. Ø 35/38 x 85 - 110 mm, e.g. 15049, 15050, 15056, polyallomer		
18051	Rectangular carrier for 2 tubes with screw cap 40 - 50 ml, max. Ø 29/35 x 80 - 110 mm, e.g. 13055, 15051, 15052, polypropylene		
18052	Rectangular carrier for 2 culture tubes 50 ml (Nunc, Corning, Falcon, Greiner) e.g. 15151, polypropylene		
18053	Rectangular carrier for 2 culture tubes 50 ml with skirt (Nunc, Corning, Falcon, Greiner), max. Ø 29.5/38 x 85 - 118 mm, polypropylene		
18085	Rectangular carrier for 1 tube with screw cap 78 - 85 ml, max. Ø 38/40 x 85 - 112 mm, e.g. 13085, 15076, 15080, polyallomer		
18100	Rectangular carrier for 1 tube 100 ml, max. Ø 45.5/48 x 85 - 110 mm, e.g. 15100, 15102, 15103, 15106, polyallomer		
18105	Rectangular carrier for 20 RIA-tubes 5 ml, max. Ø 12.2 x 60 - 75 mm, flat and round bottom tubes, e.g. 15060, decantable, polyallomer		
18107	Rectangular carrier for 20 glass tubes 7 ml, max. Ø 12.3 x 80 - 105 mm, flat and round bottom tubes, e.g. 15007, 15027, decantable, polyallomer		
18115	Rectangular carrier for 20 glass tubes 7 ml, max. Ø 12.3 x 80 - 105 mm, flat and round bottom tubes, e.g. 15007, 15027, decantable, polyallomer		
18125	Rectangular carrier for 1 bottle with screw cap 125 ml, max. Ø 51 x 90 - 120 mm, e.g. 15125, polypropylene		
18200	Rectangular carrier for 1 bottle with screw cap 125 ml, max. Ø 51 x 90 - 120 mm, e.g. 15125, polypropylene		

Part no.	Description	Max. speed (rpm)	Max. gravitational field (x g)
11181	Swing-out rotor 48 x 15 ml complete, no. 11180, incl. 2 sets rectangular buckets no. 13180, 2 sets rectangular carriers no. 18015 and 48 PPCO-tubes 15 ml no. 15023, max. radius 17.1 cm, min. radius 7.6 cm	4 500	3 871
11182	Swing-out rotor 12 x 50 ml culture tubes complete, no. 11180, incl. 2 sets buckets no. 13190, 2 sets adapters no. 17346 and 12 tubes no. 15151, max. radius 17.2 cm, min. radius 7.5 cm	4 500	3 894
13190	Round bucket, sealable with cap no. 17190, suitable for round carriers Ø 85 mm (no. 17344 – 17400, 17402 without cap), max. tube length 110 mm, 1 set = 2 pcs., max. radius 17.2 cm, min. radius 7.5 cm	4 500	3 894
17190	Round polysulfone sealing cap, clear, 1 set = 2 pcs., suitable for 13190		
17350	Round carrier for 24 reaction vials 0.5/0.75 ml, max. Ø 8/10 x 28/31 mm, e.g. no. 15005, 1 set = 2 pcs.		
17351	Round carrier for 12 flat bottom tubes 4 - 7 ml, flat bottom, max. Ø 15.5/18 x 50 - 75 mm, e.g. Monovettes 4 ml, 1 set = 2 pcs.		
17352	Round carrier for 25 round bottom tubes 5 ml, max. Ø 12.5/13.5 x 65 - 80 mm, e.g. no. 15060, RIA - tubes, hemolyse tubes, 1 set = 2 pcs.		
17353	Round carrier for 20 reaction vials 1.5/2.0 ml, max. Ø 11 mm, e.g. no. 15008, 15040, 1 set = 2 pcs.		
17354	Round carrier for 16 round bottom tubes 7 ml, max. Ø 12.5 x 85 - 115 mm, e.g. no. 15007, 15027, 1 set = 2 pcs.		
17355	Round carrier for 12 round bottom tubes 10 - 12 ml, max. Ø 16.2/19 x 65 - 90 mm, e.g. no. 15000, 15010, 15039, 1 set = 2 pcs.		
17356	Round carrier for 16 round bottom tubes 5 - 6 ml, max. Ø 13.5/17.5 x 70 - 90 mm, e.g. no. RIA tube 15060, Vacutainer, hemolyse tubes, 1 set = 2 pcs.		
17358	Round carrier for 12 round bottom tubes 10 - 15 ml, max. Ø 17.2/19.5 x 90 - 115 mm, e.g. no. 15015, 15020, 15022, 15023, 15024 and Monovettes 9 - 10 ml, 1 set = 2 pcs.		
17345	Round carrier for 5 culture tubes 15 ml, e.g. no. 15115, 1 set = 2 pcs.		
17362	Round carrier for 5 tube 30 ml, flat bottom or skirt, max. Ø 25/31 x 65 - 95 mm, e.g. Sterilin tube 30 ml, Barloworld Scientific Ltd., 1 set = 2 pcs.		
17370	Round carrier for 5 round bottom tubes 25 - 30 ml, max. Ø 25.4/29 x 85 - 115 mm, e.g. no. 15025, 15026, 15029, 15030, 15032, 15033, 1 set = 2 pcs.		

Part no.	Description	Max. speed (rpm)	Max. gravitational field (x g)
17375	Round carrier for 3 round bottom tubes 50 ml, max. Ø 35/38 x 90 - 110 mm, e.g. no. 15049, 15050, 15056, 1 set = 2 pcs.		
17376	Round carrier for 4 round bottom tubes with screw cap 40 - 50 ml, max. Ø 29/34 x 85 - 110 mm, e.g. no. 15051, 15052, (13055 with 13350/13550 only), 1 set = 2 pcs.		
17346	Round carrier for 3 culture tubes 50 ml, e.g. no. 15151, 1 set = 2 pcs.		
17344	Round carrier for 3 culture tubes 50 ml with skirt or flat bottom, max. Ø 29.4/36 x 90 - 120 mm, 1 set = 2 pcs.		
17385	Round carrier for 1 tube 78 - 85 ml, max. Ø 38/40 x 85 - 115 mm, e.g. no. 13085, 15076, 15080, 1 set = 2 pcs.		
17390	Round carrier incl. rubber cushion no. 16051, for 1 round bottom tube 100 ml, max. Ø 45/50 x 85 - 110 mm, e.g. no. 15100, 15102, 15103, 15106, 1 set = 2 pcs.		
17393	Round carrier for 1 bottle 175 - 250 ml with pointed bottom angle 60°, max. Ø 61.5 x 120 - 165 mm, e.g. no. 15174, 15175, Corning tubes, 1 set = 2 pcs.		
17395	Round carrier for 1 bottle with flat bottom 125 ml, max. Ø 51 x 90 - 115 mm, e.g. no. 15125, 1 set = 2 pcs.		
17400	Round carrier for 1 bottle with flat bottom 200 ml, max. Ø 57 x 90 - 115 mm, e.g. no. 15202, 1 set = 2 pcs.		
17347	Round carrier for 1 bottle with flat bottom, 250 ml, max. Ø 61.5 x 90 - 125 mm, e.g. no. 15247, 15249; (13255 with 13350/13550 only), 1 set = 2 pcs.		
17401	Round carrier incl. rubber cushion no. 16250 for 1 round bottom tube 175 - 250 ml, max. Ø 57.5 x 90 - 137 mm with 13350 and 150 mm with 13550, e.g. no. 15201, 15206, 15250, 15251, 15254, 1 set = 2 pcs.		
11240	Swing-out rotor for microtiter plates, incl. 1 set buckets no. 13145 and plate holder no. 17977, radius edge 12.7 cm, radius max. 11 cm, radius min. 4.6 cm, max. plate height 64 mm	4 200	2 505 2 169 907
11222	Swing-out rotor for microtiter plates, incl. 1 set carriers no. 13222, radius edge 12.3 cm, radius max. 10.5 cm, radius min. 6.5 cm, max. plate height 56 mm	3 000	1 238 1 057 654
11133	Swing-out rotor, 4 place, for buckets no. 13104, 13130	5 500	5 411
13130	Bucket, suitable for 3 culture tubes 15 ml no. 15115, sealable with cap no. 17109, 17111, 1 set = 2 pcs.		

Part no.	Description	Max. speed (rpm)	Max. gravitational field (x g)
13104	Round bucket, sealable with caps no. 17109 and 17111, suitable for round carriers Ø 56.5 no. 17000 - 17101 and bottles 200 ml no. 15202, max. tube length 110 mm, 1 set = 2 pcs., max. radius 15.5 cm, min. radius 4.5 cm	5 500	5 242
17109	Round aluminium sealing cap, for hermetic sealing of buckets 13104, 13130, 1 set = 2 pcs.		
17111	Round polysulfone sealing cap, clear, for hermetic sealing of buckets 13104, 13130, 1 set = 2 pcs.		
17006	Round carrier for 12 tubes approx. 5 ml, round and flat bottom, max. Ø 12.5 x 55 - 75 mm, e.g. no. RIA tube 15060, hemolyse, 1 set = 2 pcs.		
17007	Round carrier for 12 tubes 7 ml, max. Ø 12.3 x 90 - 105 mm, e.g. no. 15007, 15027, 1 set = 2 pcs.		
17008	Round carrier for 12 reaction vials 1.5/2.0 ml, max. Ø 11 mm, e.g. no. 15008, 15040, 1 set = 2 pcs.		
17027	Round carrier for 7 round bottom tubes 5 - 7 ml, max. Ø 13.5/17.5 x 65 - 90 mm, e.g. Vacutainer, 1 set = 2 pcs.		
17012	Round carrier for 6 tubes approx. 10 ml, max. Ø 16.5/17.5 x 58 - 90 mm, e.g. no. 15000, 15010, 15039, 1 set = 2 pcs.		
17015	Round carrier for 7 tubes 10 - 15 ml, round and flat bottom, max. Ø 16.8 x 90 - 105 mm, e.g. no. 15015, 15023, 15024, 1 set = 2 pcs.		
17018	Round carrier for 4 tubes 9 - 15 ml, round and flat bottom, max. Ø 17/20 x 90 - 110 mm, e.g. no. 15015, 15020, 15022, 15023, 15024, Monovettes 9 - 10 ml, 1 set = 2 pcs.		
17019	Round carrier for 3 culture tubes 15 ml no. 15115, only without cap 17111 or 17109, 1 set = 2 pcs.		
17025	Round carrier for 2 round bottom tubes 25 ml, max. Ø 24.5 x 90 - 105 mm, e.g. no. 15025, 15026, 15033, 1 set = 2 pcs.		
17032	Round carrier for 1 tube 30 ml, flat bottom or skirt, max. Ø 25/31 x 65 - 95 mm, e.g. Sterilin tube 30 ml, Barloworld Scientific Ltd., 1 set = 2 pcs.		
17030	Round carrier for 2 round bottom tubes 25 - 30 ml, max. Ø 25.4/27.5 x 85 - 110 mm, e.g. no. 15025, 15026, 15029, 15030, 15032, 15033, 1 set = 2 pcs.		
17049	Round carrier for 1 culture tube 50 ml no. 15151, 1 set = 2 pcs.		
17050	Round carrier for 1 round bottom tube 50 ml, max. Ø 35/38 x 85 - 110 mm, e.g. no. 15049, 15050, 15056, 1 set = 2 pcs.		
17052	Round carrier for 1 round bottom tube 40 - 50 ml, max. Ø 29/35 x 85 - 115 mm, e.g. no. 13055, 15051, 15052, 1 set = 2 pcs.		

Part no.	Description	Max. speed (rpm)	Max. gravitational field (x g)
17085	Round carrier for 1 round bottom tube 78 - 85 ml, max. Ø 38/40 x 85 - 112 mm, e.g. no. 13085, 15076, 1 set = 2 pcs.		
17100	Round carrier for 1 round bottom tube approx. 100 ml, max. Ø 45.5 x 85 - 105 mm, e.g. no. 15100, 15103, 15106, 1 set = 2 pcs.		
17101	Round carrier for 1 round bottom tube 100 ml, max. Ø 45.5 x 85 - 105 mm, e.g. no. 15100, 15102, 15102, 15103, 15106, 1 set = 2 pcs.		
17125	Adapter for 1 bottle with flat bottom and screw cap 125 ml, max. Ø 51 x 90 - 120 mm, e.g. no. 15125, 1 set = 2 pcs.		
11132	Swing-out rotor 28 x 15 ml complete, no. 11133, incl. 2 sets buckets no. 13104, 2 sets round carriers no. 17015 and 28 PS-tubes 15 ml no. 15023, max. radius 15.5 cm, min. radius 4.5 cm	5 500	5 242
11224	Swing-out cytology rotor complete, incl. 2 sets buckets no. 13224, 4 inserts no. 15223. The buckets with object carriers could be locked in 90° position, max. radius 11.3 cm, min radius 6.9 cm	3 000	1 137
11136	Drum rotor for 6 cassettes no. 14000, 14002, 14020, 14021, for reaction vials (max. 60/192 pcs.), incl. lid no. 17826, max. radius 7 cm, min. radius 3 cm	14 500	16 454
	Attention! The vessels could be damaged at speeds exceeding 13,000 rpm!		
14000	Casset, suitable for 20 reaction vials 0.25/0.4 ml no. 15014, 1 set = 2 pcs.		
14002	Casset, suitable for 10 reaction vials 1.5/2.0 ml, e.g. no. 15008, 15040, 1 set = 2 pcs.		
14020	Casset, suitable for 10 PCR-vials 0.2 or 0.5 ml, 1 set = 2 pcs.		
14021	Casset, suitable for 32 PCR-tubes 0.2 ml, e.g. no. 15042 or 4 strips with max. 8 tubes 0.2 ml, 1 set = 2 pcs.		
11135	Swing-out rotor 24 x 1.5/2.0 ml, incl. 3 sets buckets no. 13124, for e.g. reaction vials no. 15008, 15040, incl. hermetic aluminium lid no. 17879, max. radius 7.4 cm, min. radius 3.5 cm	14 000	16 215
12154	Angle rotor 24 x 1.5/2.0 ml, for e.g. reaction vials no. 15008, 15040, incl. hermetic aluminium lid no. 17829, max. radius 8.2 cm, min. radius 5 cm, angle 45°	5 300	21 460
12131	Angle rotor 30 x 1.5/2.0 ml, for e.g. reaction vials no. 15008, 15040, incl. hermetic aluminium lid no. 17848, max. radius 10 cm, min. radius 6.7 cm, angle 45°	14 000	21 913

Part no.	Description	Max. speed (rpm)	Max. gravitational field (x g)
12349	Angle rotor 48 x 1.5/2.0 ml, for reaction vials, e.g. no. 15008, 15040, incl. aluminium hermetic lid no. 17349, max. radius 10.0 cm, min. radius 6.5 cm	14 000	21 913
12115	Angle rotor, for 12 PCR-strips with 8 tubes 0.2 ml, e.g. no. 15042, incl. hermetic aluminium lid no. 17875, max. radius 9.8 cm, min. radius 7.2 cm, angle 45°	14 000	21 475
12111	Angle rotor 10 x 10 ml, for tubes no. 15000, 15010, 15039, incl. hermetic aluminium lid no. 17835, max. radius 7.6 cm, min. radius 2.8 cm, angle 35°	15 300	19 890
12157	Angle rotor 20 x 10 ml, for tubes e.g. no. 15000, 15010, 15039, incl. hermetic aluminium lid no. 17841, max. radius 9.8 cm, min. radius 5.9 cm, angle 25°	10 000	10 956
12171	Angle rotor for 12 x 15 ml culture, e.g. no. 15115, incl. hermetic aluminium lid no. 17872, max. radius 9.9 cm, min. radius 4.3 cm, angle 25°	9 500	9 965
12158	Angle rotor 6 x 30 ml, for tubes e.g. no. 15029, 15030, 15032, incl. hermetic aluminium lid no. 17842, max. radius 7.9 cm, min. radius 2.1 cm, angle 30°	15 300	20 675
13059	Adapter for 1 round bottom tube 10 ml, max. Ø 16.2/19 x 75 - 85 mm, e.g. no. 15000, 15010, 15039, 1 set = 2 pcs., suitable in 12158		
12150	Angle rotor 6 x 50 ml, for tubes e.g. no. 13055, 15051, 15052, incl. hermetic aluminium lid no. 17837, max. radius 8.4 cm, min. radius 2.1 cm, angle 25°	11 000	11 363
12156	Angle rotor 8 x 50 ml, for tubes e.g. no. 13055, 15051, 15052, incl. hermetic aluminium lid no. 17840, max. radius 9.6 cm, min. radius 3.3 cm, angle 25°	10 000	10 733
19776	Angle rotor for 6 x 50 ml culture, e.g. no. 15151, incl. hermetic aluminium lid no. 17831, max. radius 9.3 cm, min. radius 3.1 cm, angle 25°	9 500	9 384
13060	Adapter for 1 culture tube 15 ml no. 15115, 1 set = 2 pcs., suitable for 19776		
13062	Adapter for 1 Greiner tube 15 ml, Ø 17/22 x 95 - 100 mm, 1 set = 2 pcs.		
13079	Bottomadapter for 1 tube 50 ml, e.g. no. 15051, 15052, 1 set = 2 pcs., suitable for 19776		
12155	Angle rotor 4 x 80/85 ml, for tubes e.g. no. 13085, 15076, 15080, incl. hermetic aluminium lid no. 17839, max. radius 9.1 cm, min. radius 1.4 cm, angle 30°	10 000	10 174
12159	Angle rotor 6 x 85 ml, for tubes e.g. no. 13085, 15076, 15080, incl. hermetic aluminium lid no. 17843, max. radius 9.8 cm, min. radius 2.8 cm, angle 25°	8 000	7 012
13080	Adapter for 1 culture tube 50 ml, e.g. no. 15151, 1 set = 2 pcs., suitable for 12155 without lid, 12159		
13081	Adapter for 1 culture tube 15 ml, e.g. no. 15115, 1 set = 2 pcs., suitable for 12155 without lid, 12159		

Part no.	Description	Max. speed (rpm)	Max. gravitational field (x g)
13082	Adapter for 1 tube 50 ml, max. Ø 28.8 x 105 - 115 mm, e.g. no. 13055, 15051, 15052, 1 set = 2 pcs., suitable for 12155, 12159		
13083	Adapter for 1 tube 30 ml, max. Ø 25.5 x 90 - 100 mm, e.g. no. 15029, 15030, 15032, 1 set = 2 pcs., suitable for 12155, 12159		
13084	Adapter, for 2 tubes 10 ml, Ø 16/17.5 x 75 - 90 mm, e.g. no. 15000, 15010, 15039, 1 set = 2 pcs., suitable for 12155, 12159		

Adapters, tubes and steel tubes

Part no.	Description
13000	Adapter for reaction vials 0.25/0.4 ml no. 15014, 1 set = 2 pcs., suitable for 12110, 12131, 12154, 12349, 18002, POM
13002	Adapter for reaction vials 0.5/0.75 ml, Ø 7.9/10 x 28/31 mm, e.g. no. 15005, 1 set = 2 pcs., suitable for 12110, 12131, 12154, 12349, 18002, POM
13021	Adapter for PCR-tube 0.2 ml, e.g. no. 15042, 1 set = 2 pcs., suitable for 12110, 12131, 12154, 12349, 18002, POM
13062	Adapter for 1 Greiner tube 15 ml, Ø 17/22 x 95 - 100 mm, 1 set = 2 pcs., suitable for 12150, 12159
15005	Reaction vials 0.5 ml, 100 pcs. per pack, suitable for 13002, 17350
15008	Reaction vials 1.5 ml, 100 pcs. per pack, suitable for 13002, 17350
15040	Reaction vials 2.0 ml, 100 pcs. per pack, suitable for 12110, 12131, 12154, 12349, 14002, 17008, 17353, 18002
15014	Reaction vials made of polypropylene 0.4 ml, 100 pcs. per pack, suitable for 13000, 14000
15042	Reaction vials 0.2 ml, 100 pcs. per pack, suitable for 13021, 12115, 14021
15060	Polystyrene tube 5 ml (RIA), Ø 12 x 75 mm, suitable for 17006, 17356, 18005, 18009
15000	Polyfluor tube 10 ml, Ø 16.1 x 81.1 mm, incl. screw cap, suitable for 12111, 12157, 13084, 17012, 17355, 18010
15010	Polycarbonate tube 10 ml, Ø 16.1 x 81.1 mm, incl. screw cap, suitable for 12111, 12157, 13084, 17012, 17355, 18010
15039	Polypropylene Co-Polymer (PPCO) tube 10 ml, Ø 16.1 x 81.1 mm, incl. screw cap, suitable for 12111, 12157, 13084, 17012, 17355, 18010
15020	Polystyrene tube 14 ml, Ø 17 x 100 mm, max. 4.500 x g, suitable for 17358, 18015, 18115
15021	Polypropylene stopper for tubes no. 15020, 15023
15023	Polypropylene Co-Polymer (PPCO) tube 14 ml, Ø 17 x 100 mm, suitable for 17015, 17358, 18015, 18115
15115	Culture tube Nunc, 15 ml, pointed bottom, polypropylene, incl. screw cap Ø 23 mm, suitable for 13060, 13081, 17019, 17345, 18016, 19777
15029	Polyfluor tube 28 ml, Ø 25.3 x 96 mm, incl. screw cap, suitable for 12158, 13083, 17030, 17370, 18030

Part no. Description

- 15030 Polycarbonate tube 30 ml, Ø 25.3 x 98 mm, incl. screw cap, suitable for 12158, 13083, 17030, 17370, 18030
- 15032 Polypropylene Co-Polymer (PPCO) tube 27 ml, Ø 25.3 x 97 mm, incl. screw cap, suitable for 12158, 13083, 17030, 17370, 18030
- 15049 Polycarbonate tube 65 ml, Ø 34 x 100 mm, graduated 1 up to 50 ml in 1 ml increments, suitable for 17050, 17375, 18050
- 13055 Stainless steel tube 50 ml, Ø 28.5 x 101.5 mm, sealable with cap no. 17054, suitable for 12150, 12156, 13082, 17052, 18051
- 17054 Stainless steel sealing cap for 13055
- 15051 Polyfluor tube 38 ml, Ø 28.5 x 107 mm, incl. screw cap, suitable for 12150, 12156, 13079, 13082, 17052, 17376, 18051
- 15052 Polypropylene Co-Polymer (PPCO) tube 42 ml, Ø 28.8 x 107 mm, incl. screw cap, suitable for 12150, 12156, 13079, 13082, 17052, 17376, 18051
- 15151 Culture tube Nunc, 50 ml, pointed bottom, polypropylene, incl. screw cap, suitable for 13080, 17049, 17346, 18052, 19776
- 13085 Stainless steel tube 85 ml, Ø 38 x 103 mm, sealable with cap no. 17185, suitable for 12155, 12159, 17085, 17385, 18085
- 17185 Round stainless steel sealing cap for 13085
- 15074 Polycarbonate tube 82 ml, Ø 38 x 108 mm, incl. special aluminium screw cap with seal for high speeds, 82 ml, Ø 38 x 109 mm, suitable for 12155, 12159, 17085, 17385, 18085
- 15075 Polycarbonate tube 82 ml, Ø 38 x 112 mm, incl. screw cap, suitable for 12155, 12159, 17085, 17385, 18085
- 15076 Polypropylene Co-Polymer (PPCO) tube 78 ml, Ø 38 x 112 mm, incl. screw cap, suitable for 12155, 12159, 17085, 17385, 18085
- 15080 Polyfluor tube 81 ml, Ø 38 x 112 mm, incl. screw cap,, suitable for 12155, 12159, 17085, 17385, 18085
- 15102 Polypropylene tube 120 ml, Ø 45 x 100 mm, suitable for 17101, 17390, 18100
- 15103 Polycarbonate tube 110 ml, Ø 45 x 100 mm, graduated 2 up to 100 ml in 2 ml increments, suitable for 17100, 17101, 17390, 18100
- 15125 Polypropylene bottle 125 ml, Ø 51 x 99 mm, incl. screw cap, suitable for 17125, 17395, 18125
- 15202 Polypropylene Co-Polymer (PPCO) bottle 190 ml, Ø 56 x 112 mm incl. screw cap, suitable for 13104, 17400, 18200
- 13255 Stainless steel bottle 250 ml, Ø 61.4 x 125 mm, sealable with cap no. 17256, suitable for 17347
- 17256 Round stainless steel sealing cap for 13255
- 15247 Polyfluor bottle 250 ml, Ø 61.4 x 122 mm, incl. screw cap, suitable for 17347
- 15249 Polypropylene Co-Polymer (PPCO) bottle 250 ml, Ø 61.4 x 125 mm, incl. screw cap, suitable for 17347

Centrifuge glass tubes

Part no. Description

Part no. Description

15007	Centrifuge glass tube 6 ml, max. 4.000 x g, Ø 12 x 100 mm, suitable for 17007, 17354, 18007, 18107
15027	Centrifuge glass tube 7 ml, max. 4.000 x g, Ø 12 x 100 mm, graduated 1 up to 7 ml in 0.5 ml increments, suitable for 17007, 17354, 18007, 18107
15015	Centrifuge glass tube 10 - 12 ml, max. 4.000 x g, Ø 16 x 100 mm, suitable for 17015, 17358, 18015, 18115
15024	Centrifuge glass tube 12 ml, max. 4.000 x g, Ø 16 x 100 mm, graduated 0.1 ml up to 10 ml in 0.1 ml increments, suitable for 17015, 17358, 18015, 18115
15022	Glass tube 13.5 ml, max. 4.000 x g, Ø 17 x 110 mm, suitable for 12150, 12156 with 16018 and for 12155, 12159 with 16019
15025	Centrifuge glass tube 26 ml, max. 4.000 x g, Ø 24 x 100 mm, suitable for 17025, 18025
15026	Centrifuge glass tube 27 ml, max. 4.000 x g, Ø 24 x 100 mm, graduated 2 up to 25 ml in 0.5 ml increments, suitable for 17025, 18025
15033	Glass tube 32 ml, max. 4.000 x g, Ø 24 x 105 mm, suitable for 12150, 12156 with 16030 and for 12155, 12159 with 16031
15050	Centrifuge glass tube 58 ml, max. 4.000 x g, Ø 34 x 100 mm, suitable for 17050, 17375, 18050
15056	Centrifuge glass tube 58 ml, max. 4.000 x g, Ø 34 x 100 mm, graduated 2 up to 50 ml in 2 ml increments, suitable for 17050, 17375, 18050
15100	Centrifuge glass tube 100 ml, max. 4.000 x g, Ø 44 x 100 mm, suitable for 17100, 17101, 17390, 18100
15106	Centrifuge glass tube 97 ml, max. 4.000 x g, Ø 44 x 100 mm, graduated 1 up to 97 ml in 1 ml increments, suitable for 17100, 17101, 17390, 18100
15201	Centrifuge glass tube 200 ml, max. 4.000 x g, Ø 56 x 112 mm, suitable in 17401
15206	Centrifuge glass tube 200 ml, max. 4.000 x g, Ø 56 x 113 mm, graduated 30 up to 150 ml in 2 ml increments, suitable in 17401

Further accessories

Part no. Description

16018	Rubber adapter for special glass tube 15 ml no. 15022 and for glass tube no. 15085, 1 set = 2 pcs., suitable for 12150, 12156
16019	Rubber adapter for special glass tubes no. 15015, 15022 and 15085, 1 set = 2 pcs., suitable for 12155, 12159
16030	Rubber adapter for glass tube no. 15025, 15033 and 15086, 1 set = 2 pcs., suitable for 12150, 12156
16031	Rubber adapter for special glass tube 30 ml no. 15033, 15086, for glass tube 25 ml no. 15025, 1 set = 2 pcs., suitable for 12155, 12159
16906	Rubber cushion for rectangular carrier 5 x 25 ml, 1 set = 2 pcs., suitable for 18025
16907	Rubber cushion for rectangular carrier 2 x 50 ml, 1 set = 2 pcs., suitable for 18050
16908	Rubber cushion for rectangular carrier 1 x 100 ml, 1 set = 2 pcs., suitable for 18100
16909	Rubber cushion for rectangular carriers, 1 set = 2 pcs., suitable for 18005, 18007, 18015
16910	Rubber cushion for round carriers, 1 set = 2 pcs., suitable for 17006, 17007, 17012, 17015, 17025
16911	Rubber cushion for round carriers 1 x 50 ml and 1 x 100 ml, 1 set = 2 pcs., suitable for 17050, 17100
17112	Rectangular polysulfone sealing cap, clear, incl. 1 set clips no. 17118, 1 set = 2 pcs., suitable for 13180
17111	Round polysulfone sealing cap, clear, 1 set = 2 pcs., suitable for 13104
16251	Sealing ring 58 x 3 mm for bucket no. 13104, 1 set = 2 pcs.
17190	Round polysulfone sealing cap, clear, 1 set = 2 pcs., suitable for 13190
17927	Table for centrifuge made of sheet-steel, varnished, with 2 doors and space for accessories, movable on lockable castors, dimensions: height 515 mm, width 490, depth 684

Further accessories available upon request.

10.1 Maximum speed for tubes

Some tubes, such as centrifuge glass tubes, microtubes, culture tubes, fluoropolymer tubes and especially high-volume tubes can be used in our rotors, buckets, and adapters at higher speeds than their breaking limit.

- Always fill the tubes up to their useful volume (= the volume that is stated for the tube).
- When using glass tubes, the maximum value of 4,000 x g must not be exceeded (except special high-strength glass tubes; please refer to the information provided by the manufacturer).

10.2 Graphical Representation of the Rotors

The graphical representation of the rotors shows the maximum and minimum radii of the accessories used. If necessary, the values must be manually calculated (see 11.1.1 “RCF”, page 71).

Fig. 10.1: Minimum and maximum radius of a swing-out rotor

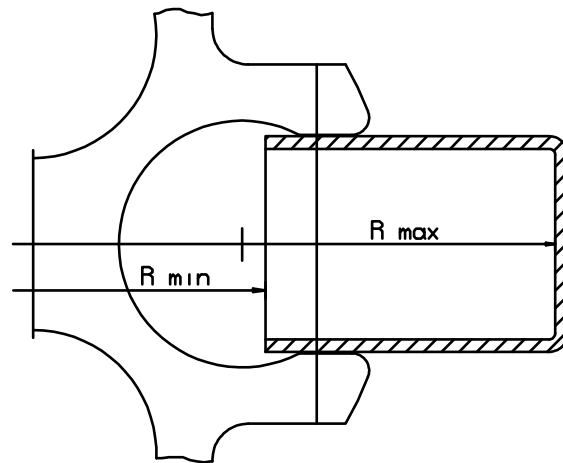
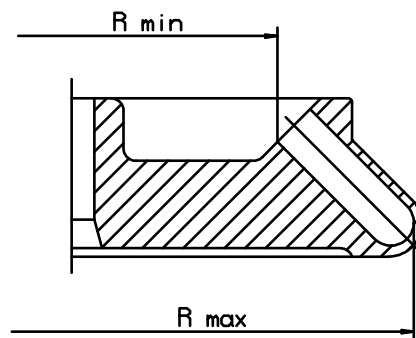


Fig. 10.2: Minimum and maximum radius of an angle rotor



11 Appendix

11.1 Formulae – Mathematical Relations

11.1.1 Relative Centrifugal Force (RCF)

The parameters speed, RCF, and the group rotor and radius cannot be specified independently. They are interrelated via the following formula:

$$\text{RCF} = 11.18 \times 10^{-6} \times r \times n^2$$

If two values are given, the third value is determined by the equation. If then the speed or the rotation radius is changed, the resulting RCF will be recalculated. If the RCF is altered, the speed will be adapted accordingly under the consideration of the radius.

r = radius in cm
n = speed in rpm
RCF without dimension

11.1.2 Density

If the density of the liquid is higher than 1.2 g/cm³, the maximum permissible speed of the centrifuge is calculated according to the following formula:

$$n = n_{\text{max}} \times \sqrt{(1.2 / \text{Rho})}$$

Rho = density in g/cm³

11.1.3 Speed-Gravitational-Field-Diagram

Additional help can be found in the enclosed speed-gravitational-field-diagram (see next page).

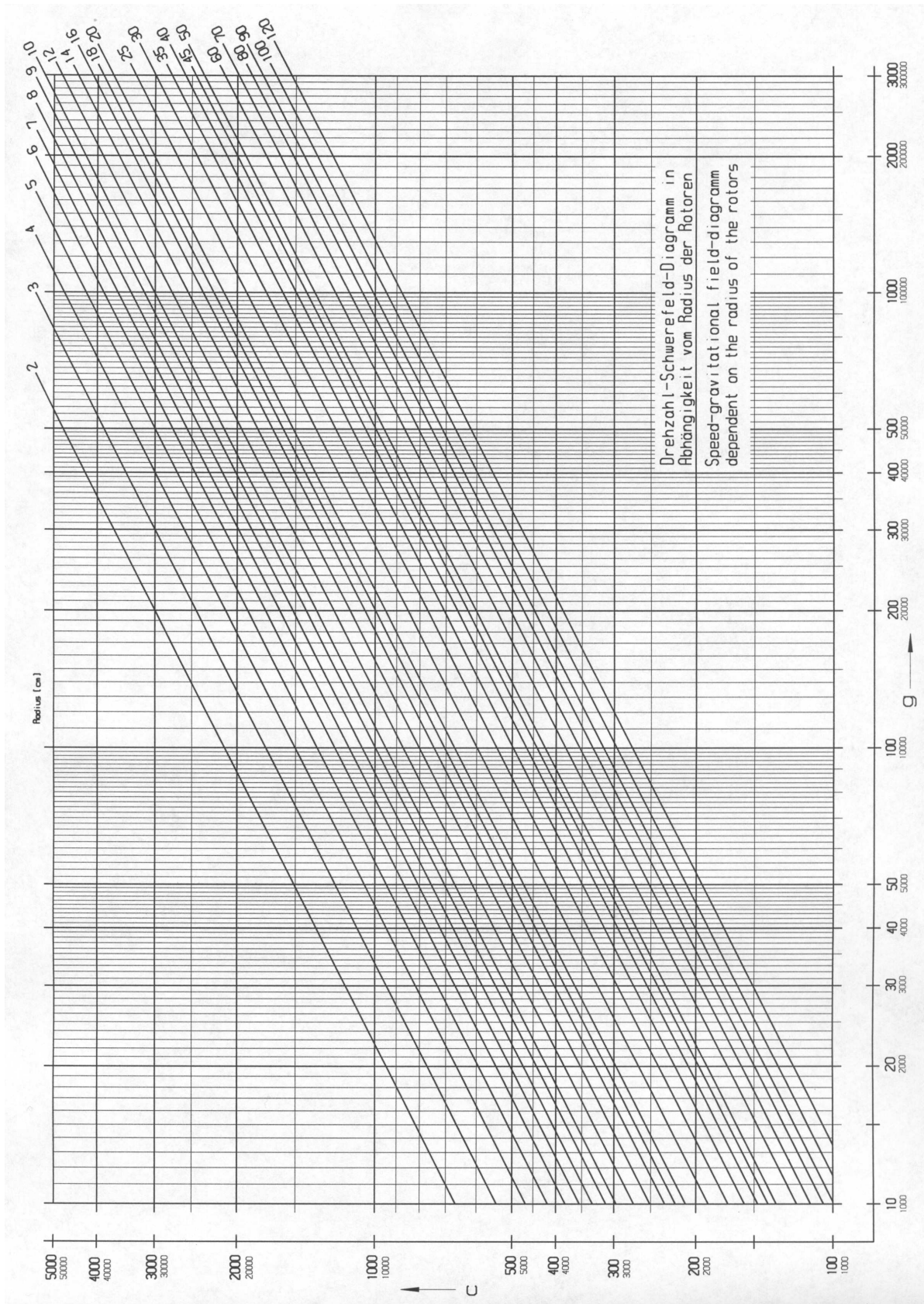


Fig. 11.1: Speed-gravitational-field-diagram

11.2 Table of rotors and accessories with a different service life



Rotors and accessories with a different service life

If other no data concerning the service life are engraved on the rotor or accessory, rotors and buckets must be checked by the manufacturer after 10,000 cycles. After 50,000 cycles, rotors must be scrapped for safety reasons.

Rotor / bucket	Cycles	Service life ("Exp.Date")	Autoclaving	Suitable for centrifuge	Remarks
11026		7 years		1-14, 1-14K	
12082		7 years		1-14, 1-14K	
12083		7 years		1-14, 1-14K	
12084		7 years		1-14, 1-14K	
12085		7 years		1-14, 1-14K	
12092		5 years	20x	1-14, 1-14K	
12093		5 years	20x	1-14, 1-14K	
12094		5 years	20x	1-14, 1-14K	
12096		5 years	20x	1-14, 1-14K	
12101		5 years	20x	1-15, 1-15K, 1-15P, 1-15PK	
12124		5 years	20x	1-15, 1-15K, 1-15P, 1-15PK	
12126		5 years	20x	1-15, 1-15K, 1-15P, 1-15PK	
9100	15,000			4-15C, 4K15C, 4-16, 4-16K, 6-15, 6K15, 6-16, 6-16K	without engraving, only "spincontrol professional"
12500		7 years		6-15, 6K15, 6-16, 6-16K	
13845	20,000			8K	
13850	10,000			8K	
13860	35,000			8K	
13864	1,000			8K	without engraving
13865	1,000			8K	without engraving
13866	1,000			8K	without engraving

11.3 Resistance Data

Resistant at +20 °C

		Concentration	High Density Polyethylene	Polyamide	Polycarbonate	Polyoxymethylene	Polypropylene	Polysulfone	Polyvinyl chloride, hard	Polyvinyl chloride, weak	Polytetrafluorethylene	Aluminum
Medium	Formula	[%]	HDPE	PA	PC	POM	PP	PSU	PVC	PVC	PTFE	AL
- no data												
1 resistant												
2 practically resistant												
3 partially resistant												
4 not resistant												
Acetaldehyde	C ₂ H ₄ O	40	3	2	4	2	3	4	4	-	1	1
Acetamide	C ₂ H ₅ NO	saturated	1	1	4	1	1	4	4	-	1	1
Acetone	C ₃ H ₆ O	100	1	1	4	1	1	4	4	-	1	1
Acrylonitrile	C ₃ H ₃ N	100	1	1	4	3	3	4	4	4	1	1
Allyl alcohol	C ₃ H ₆ O	96	1	3	3	2	2	2	2	4	1	1
Aluminum chloride	AlCl ₃	saturated	1	3	2	4	1	-	1	-	1	4
Aluminum sulfate	Al ₂ (SO ₄) ₃	10	1	1	1	3	1	1	1	1	1	1
Ammonium chloride	(NH ₄)Cl	aqueous	1	1	1	2	1	1	1	1	1	3
Ammonium hydroxide	NH ₃ + H ₂ O	30	1	3	4	1	1	2	1	-	1	1
Aniline	C ₆ H ₇ N	100	1	3	4	1	2	4	4	4	1	1
Anisole	C ₇ H ₆ O	100	3	4	4	1	4	4	2	-	1	1
Antimony trichloride	SbCl ₃	90	1	4	1	4	1	-	1	-	1	4
Benzaldehyde	C ₇ H ₆ O	100	1	3	4	1	1	3	4	4	1	1
Benzene	C ₆ H ₆	100	3	2	4	1	3	4	4	-	1	1
Boric acid	H ₃ BO ₃	aqueous	1	3	1	2	1	-	-	-	1	1
Butyl acrylate	C ₇ H ₁₂ O ₂	100	1	2	4	2	3	4	4	4	1	1
Butyl alcohol, normal	C ₄ H ₁₀ O	100	1	1	2	1	1	2	2	4	1	1
Calcium chloride	CaCl ₂	alcoholic	1	4	2	3	1	-	-	4	1	3
Carbon disulfide	CS ₂	100	4	3	4	2	4	4	4	4	1	1
Carbon tetrachloride (TETRA)	CCl ₄	100	4	4	4	2	4	4	4	4	1	1
Chlorine	Cl ₂	100	4	4	4	4	4	4	4	4	1	3
Chlorine water	Cl ₂ x H ₂ O		3	4	4	4	3	-	3	3	1	4
Chlorobenzene	C ₆ H ₅ Cl	100	3	4	4	1	3	4	4	4	1	1
Chloroform	CHCl ₃	100	3	3	4	4	3	4	4	4	1	3
Chromic acid	CrO ₃	10	1	4	2	4	1	4	1	-	1	1
Chromic potassium sulfate	KCr(SO ₄) ₂ x 12H ₂ O	saturated	1	2	1	3	1	-	1	-	1	3
Citric acid	C ₆ H ₈ O ₇	10	1	1	1	2	1	1	1	1	1	1
Citric acid	C ₆ H ₈ O ₇	50	1	3	1	2	1	-	-	-	1	1
Copper sulfate	CuSO ₄ x 5H ₂ O	10	1	1	1	1	1	1	1	1	1	4
Cyclohexanol	C ₆ H ₁₂ O	100	1	1	3	1	1	1	1	4	1	1
Decane	C ₁₀ H ₂₂	100	-	1	2	1	3	-	-	-	1	1
Diaminoethane	C ₂ H ₈ N ₂	100	1	1	3	1	1	-	3	4	1	1
Diesel fuel	—	100	1	1	3	1	1	-	1	3	1	1
Dimethyl formamide (DMF)	C ₃ D ₇ NO	100	1	1	4	1	1	4	3	-	1	1
Dimethyl sulfoxide (DMSO)	C ₂ H ₆ SO	100	1	2	4	1	1	4	4	-	1	1
Dimethylaniline	C ₈ H ₁₁ N	100	-	3	4	2	4	-	-	-	1	1
Dioxane	C ₄ H ₈ O ₂	100	2	1	4	1	3	2	3	4	1	1

Resistant at +20 °C

Medium	Formula	Concentration [%]	Concentration	High Density Polyethylene	Polyamide	Polycarbonate	Polyoxymethylene	Polypropylene	Polysulfone	Polyvinyl chloride, hard	Polyvinyl chloride, weak	Polytetrafluorethylene	Aluminum
			HDPE	PA	PC	POM	PP	PSU	PVC	PVC	PTFE	AL	
- no data													
1 resistant													
2 practically resistant													
3 partially resistant													
4 not resistant													
Dipropylene glycol (mono)methyl ether	C ₄ H ₁₀ O	100	3	1	4	1	4	4	4	4	4	1	1
Ethyl acetate	C ₄ H ₈ O ₂	100	1	1	4	1	1	4	4	4	4	1	1
Ethylene chloride	C ₂ H ₄ Cl ₂	100	3	3	4	1	3	4	4	4	4	1	1
Ferrous chloride	FeCl ₂	saturated	1	3	1	3	1	1	1	1	1	1	4
Formaldehyde solution	CH ₂ O	30	1	3	1	1	1	-	-	-	-	1	1
Formic acid	CH ₂ O ₂	100	1	4	3	4	1	3	3	3	1	1	1
Furfural	C ₅ H ₄ O ₂	100	1	3	3	2	4	-	-	-	-	1	1
Gasoline	C ₅ H ₁₂ - C ₁₂ H ₂₆	100	2	1	3	1	3	3	2	-	-	1	1
Glycerol	C ₃ H ₈ O ₃	100	1	1	3	1	1	1	1	1	2	1	1
Heptane, normal	C ₇ H ₁₆	100	2	1	1	1	2	1	2	4	4	1	1
Hexane, n-	C ₆ H ₁₄	100	2	1	2	1	2	1	2	4	4	1	1
Hydrogen chloride	HCl	5	1	4	1	4	1	1	1	1	-	1	4
Hydrogen chloride	HCl	concentrated	1	4	4	4	1	1	2	3	1	1	4
Hydrogen peroxide	H ₂ O ₂	3	1	3	1	1	1	1	1	-	-	1	3
Hydrogen peroxide	H ₂ O ₂	30	1	4	1	4	1	1	1	-	-	1	3
Hydrogen sulfide	H ₂ S	10	1	1	1	1	1	1	1	3	1	1	1
Iodine, tincture of	I ₂		1	4	3	1	1	-	4	4	4	1	1
Isopropyl alcohol	C ₃ H ₈ O	100	1	1	1	1	1	1	1	4	4	1	2
Lactic acid	C ₃ H ₆ O ₃	3	1	3	1	2	1	1	2	-	-	1	1
Magnesium chloride	MgCl ₂	10	1	1	1	1	1	1	1	1	1	1	1
Mercuric chloride	HgCl ₂	10	1	4	1	3	1	1	1	1	1	1	4
Mercury	Hg	100	1	1	1	1	1	1	1	3	1	1	3
Methyl acetate	C ₃ H ₆ O ₂	100	1	1	4	2	1	-	4	4	4	1	1
Methyl alcohol	CH ₄ O	100	1	2	4	1	1	3	1	3	1	1	1
Methyl benzene	C ₇ H ₈	100	3	1	4	1	3	4	4	4	4	1	1
Methyl ethyl ketone (MEK)	C ₄ H ₈ O	100	1	1	4	1	1	4	4	4	4	1	1
Methylene chloride	CH ₂ Cl ₂	100	4	3	4	3	3	4	4	4	4	1	1
Mineral oil	—	100	1	1	1	1	1	1	1	-	-	1	1
Nitric acid	HNO ₃	10	1	4	1	4	1	1	1	-	-	1	3
Nitric acid	HNO ₃	100	4	4	4	4	4	-	4	-	-	1	1
Nitrobenzene	C ₆ H ₅ NO ₂	100	3	4	4	3	2	4	4	4	4	1	1
Oleic acid	C ₁₈ H ₃₄ O ₂	100	1	1	1	2	1	-	1	-	-	1	1
Oxalic acid	C ₂ H ₂ O ₄ x 2H ₂ O	100	1	3	1	4	1	1	1	1	1	1	1
Ozone	O ₃	100	3	4	1	4	3	1	1	-	-	1	2
Petroleum	—	100	1	1	3	1	1	1	1	3	1	1	1
Phenol	C ₆ H ₆ O	10	1	4	4	4	1	4	1	3	1	1	1
Phenol	C ₆ H ₆ O	100	2	4	4	4	1	3	4	3	1	1	1
Phosphoric acid	H ₃ PO ₄	20	1	4	2	4	1	-	-	-	-	1	4
Phosphorus pentachloride	PCl ₅	100	-	4	4	4	1	-	4	4	1	1	1
Potassium hydrogen carbonate	CHKO ₃	saturated	1	1	2	1	1	-	-	-	-	1	4
Potassium hydroxide	KOH	30	1	1	4	3	1	1	1	1	1	1	4

Resistant at +20 °C

Medium	Formula	Concentration [%]	Material										
			High Density Polyethylene	Polyamide	Polycarbonate	Polyoxymethylene	Polypropylene	Polysulfone	Polyvinyl chloride, hard	Polyvinyl chloride, weak	Polytetrafluorethylene	Aluminum	
			HDPE	PA	PC	POM	PP	PSU	PVC	PVC	PTFE	AL	
- no data													
1 resistant													
2 practically resistant													
3 partially resistant													
4 not resistant													
Potassium hydroxide	KOH	50	1	1	4	3	1	1	1	1	1	4	
Potassium nitrate	KNO ₃	10	1	1	1	1	1	-	-	-	1	1	
Potassium permanganate	KMnO ₄	100	1	4	1	1	1	-	1	-	1	1	
Pyridine	C ₅ H ₅ N	100	1	1	4	1	3	4	4	4	1	1	
Resorcinol	C ₆ H ₆ O ₂	5	1	4	2	3	1	4	2	-	1	2	
Silver nitrate	AgNO ₃	100	1	1	1	1	1	1	1	1	1	4	
Sodium bisulfite	NaHSO ₃	10	1	1	2	4	1	-	-	-	1	1	
Sodium carbonate	Na ₂ CO ₃	10	1	1	1	1	1	-	-	-	1	3	
Sodium chloride	NaCl	30	1	1	1	1	1	1	1	1	1	3	
Sodium hydroxide	NaOH	30	1	1	4	1	1	1	1	1	1	4	
Sodium hydroxide	NaOH	50	1	1	4	1	1	1	1	-	1	4	
Sodium sulfate	Na ₂ SO ₄	10	1	1	1	1	1	1	1	1	1	1	
Spirits	C ₂ H ₆ O	96	1	1	1	1	1	1	1	3	1	1	
Styrene	C ₈ H ₈	100	4	1	4	1	3	-	4	4	1	1	
Sulfuric acid	H ₂ SO ₄	6	1	4	1	4	1	1	1	-	1	3	
Sulfuric acid	H ₂ SO ₄	fuming	4	4	4	4	4	4	4	4	1	3	
Tallow	—	100	1	1	1	1	1	-	1	1	1	1	
Tetrahydrofuran (THF)	C ₄ H ₈ O	100	3	1	4	1	3	4	4	4	1	1	
Tetrahydronaphthalene	C ₁₀ H ₁₂	100	3	1	4	1	4	4	4	4	1	1	
Thionyl chloride	Cl ₂ SO	100	4	4	4	2	4	4	4	4	1	3	
Transformer oil	—	100	1	1	3	3	1	1	1	-	1	1	
Trichloroethane	C ₂ H ₃ Cl ₃	100	3	3	4	2	4	4	4	4	1	4	
Urea	CH ₄ N ₂ O	10	1	1	1	1	1	-	-	-	1	1	
Urine	—	100	1	1	1	1	1	-	1	1	1	2	
Vinegar	C ₂ H ₄ O ₂	10	1	4	1	1	1	1	1	1	1	1	
Vinegar	C ₂ H ₄ O ₂	90	1	4	4	4	1	3	1	4	1	1	
Wax	—	100	-	1	1		1	-	-	-	1	1	
Wines	—	100	1	1	1	2	1	1	1	1	1	4	
Xylene	C ₈ H ₁₀	100	3	1	4	1	4	4	4	4	1	1	
Zinc chloride	SnCl ₂	10	1	4	2	2	1	-	-	-	1	4	

12 Index

Acceleration curves	
- see also the softstart and softstop function	27
Acceleration time	
- see also the softstart and softstop function	35
Acid	74, 75, 76
Actual temperature	40
Adapter	55, 69
Alkaline solutions.....	18, 50, 51
Ambient temperature.....	12, 40
Angle rotor.....	32, 33, 55
Auto-Lid-Open function.....	44
Automatic rotor identification	42
Bucket	16, 19, 33, 52, 53, 55
Carrier	33, 53, 55
Centrifugation with different tube sizes	32
Centrifugation with low Capacity.....	32
Centrifuges	
- definition.....	11
Chemical reactions.....	52
Cleaning agents	50, 51
Closing the lid.....	19, 29
Compressor.....	41
Condensation	24
Condenser.....	54
Connected load	12
Connecting cable.....	13
Contamination	19, 50, 51
Continuous heat resistance	54
Continuous run.....	37
Corrosion.....	17, 20, 33, 50, 51, 53
Cost estimate	57
Cracks.....	20, 33, 52
Current consumption	12
Damage of the surface	52
Dangerous goods.....	18
Deceleration curves	
- see also the softstart and softstop function	27
Deceleration time	
- see also the softstart and softstop function	35
Declaration of decontamination	57
Density	17, 71, 74
Different service life of rotors and accessories	34, 73
Disinfectants.....	54
Electrical connection	12
EMC as per EN 61326.....	12
Equipotential bonding screw.....	28
Error messages.....	28, 46
Errors	28, 48
Fire-fighting measures.....	20

Form for the return of defective parts.....	57
Freezing-over of the compressor.....	41
Fuse.....	24, 46
General Conditions.....	58
Glass particles.....	53
Gravitational field.....	12, 52, 71
Grease for load-bearing bolts.....	13, 50, 52
Ground wire check.....	28
Ground wire connector.....	24
Hazard warnings.....	14, 18, 30, 31, 58
Hazards.....	11, 19, 20
Imbalance.....	18, 28, 32, 33, 48, 52, 53
Infectious substances.....	17, 19, 54
Inflammable substances.....	19
Inspection by the manufacturer.....	56
IP code.....	12
Load-bearing bolts.....	20, 52
Mains power switch.....	29, 44, 46, 47
Malfunction.....	17, 46
Maximum speed for glass tubes.....	33, 69
Maximum speed for tubes.....	69
Measures for the containment of harmful emissions.....	20
Motor shaft.....	20, 23, 30, 31, 50
Multiple carrier.....	33, 52
Noise level.....	12
Online download of forms.....	57
Opening the lid.....	29
Operating voltage.....	24
Operational safety.....	19, 51
Overseas shipping.....	22
Padlock symbol.....	44
Parameter.....	27, 71
Parameter error.....	48
Pathogenic substances.....	19, 50, 51, 54
Performance data.....	12
Pivot bearing.....	53
Power consumption.....	12
Power cord.....	24, 46, 47, 50
Precooling at a standstill.....	41
Precooling program "RAPID_TEMP".....	41
Precooling time.....	42
Pressure marks.....	52
Prevention of accidents.....	11, 15
Problem description.....	57
Program.....	27, 43
Program number.....	43
Protection class.....	12
Protective earth.....	14
Radioactive substances.....	17, 19, 50, 51
Radius.....	70, 71
Relative centrifugal force.....	27, 39, 71
Return of centrifuges, spare parts, or accessories.....	57
Rotor geometry.....	39

Rotor number	42
Rotor tie-down screw	30, 31, 52
Rotor wrench	13, 30, 31
Rotors and accessories with a different service life	34, 73
Rotors for microtiter plate formats	30
Rubber cushions	51, 53, 55
Rubber parts	20, 56
Safety class	24
Safety distance	18, 24
Safety instructions	11, 14, 16
Safety instructions and hazard warnings	30, 31
Serial number	49, 56
Service life of rotors and accessories	34, 73
Service request	3, 49, 56
Service work	56
Set temperature	40
Signs of corrosion	19, 52
Slushing oil	13, 51, 52
Solvents	18, 50, 51
Sound signal	28, 45, 46
Specialist personnel	56
Storage temperature	12, 22
Stress-corrosion	52
Structural changes	20
Supply voltage	24
Swing-out rotor	32
Table of rotors and accessories with a different service life	34, 73
Temperature	41
Temperature fuses	24
Toxic substances	17, 19, 50, 51
Transport safety device	22, 23
Type of the centrifuge	49, 56
UV radiation	24, 50
Ventilation	24, 48
Wear	56